



**User guide**

# **Modelit XML Toolbox for Matlab**

Manual: Modelit XML Toolbox for Matlab  
User guide

Authors: Kees-Jan Hoogland  
Nanne van der Zijpp

Copyright: 2006-2014, Modelit

Contact: [info@modelit.nl](mailto:info@modelit.nl)  
[www.modelit.nl](http://www.modelit.nl)

Revision history:	Date	Revision
	20141029	Add pcode verification instructions
		Add troubleshooting section
	20141022	XML validation removed
	20141021	Compile pcode version for Matlab 2012a
	20100830	additions to section "General functions"
	2006-2009	Various updates
	20060601	First version

# Contents

1	Introduction .....	1
1.1	Matlab and XML .....	1
1.2	Modelit XML toolbox for Matlab .....	1
1.3	Compatibility with Matlab versions.....	1
1.4	Downloading a trial version of the Modelit XML Toolbox.....	1
2	Installation.....	2
2.1	Install instructions.....	2
2.2	Verify installation .....	5
2.3	Content of toolbox .....	5
2.4	Dealing with large XML files: java heap space.....	7
3	Getting started with the Modelit XML toolbox for Matlab.....	8
3.1	Introduction .....	8
3.2	On the analogy between XML and Matlab data structures.....	8
3.3	xml2str and struct2xmlstr.....	10
3.4	Saving Matlab data as XML: some examples .....	11
4	Tutorial.....	15
4.1	The XML object .....	15
4.2	Accessing and manipulating data .....	17
4.3	Viewing the XML content.....	20
4.4	Saving the XML content .....	21
4.5	Transforming an XML document with a stylesheet .....	22
4.6	Using attributes .....	23
4.7	Using namespaces.....	24
4.8	Using XPath .....	27
5	Function references .....	31
5.1	Constructor.....	31
5.1.1	xml .....	31
5.2	Methods of the xml-object.....	31
5.2.1	view (has been superseded by xml2str) .....	31
5.2.2	xml2str .....	32
5.2.3	inspect .....	32
5.2.4	display.....	32
5.2.5	save .....	33
5.2.6	fieldnames .....	33
5.2.7	isfield .....	33
5.2.8	isempty .....	34
5.2.9	rmfield.....	34
5.2.10	xpath.....	35
5.2.11	subsasgn .....	35
5.2.12	subsref.....	36
5.2.13	selectNodes.....	36
5.2.14	xslt .....	36
5.2.15	addns.....	37
5.2.16	listns .....	37
5.2.17	clearns.....	37
5.2.18	removens.....	38
5.2.19	getns.....	38
5.2.20	get .....	38

5.2.21	set.....	39
5.2.22	getRoot.....	39
5.2.23	noNodes .....	39
5.3	General functions .....	40
5.3.1	install .....	40
5.3.2	serializeDOM .....	40
5.3.3	startup.....	40
5.3.4	struct2xmlstring.....	40
5.3.5	xmlpath .....	41
5.3.6	xmlUnitTest.....	41
5.4	Private methods of the xml-object.....	42
5.4.1	buildXPath .....	42
5.4.2	struct2hash .....	42
5.4.3	ind2xpath .....	43
5.4.4	emptyDocument.....	43
5.4.5	sub2ind .....	44
5.4.6	fieldInfo .....	44
5.4.7	toString .....	44
5.4.8	chararray2char.....	45
6	Examples .....	46
6.1	Books .....	46
6.2	cd_catalog.....	47
6.3	Business_card.....	51
6.4	Note .....	52
6.5	Plant_catalog.....	53
6.6	namespaces.....	58
6.7	default_namespace .....	59
6.8	mixed .....	60

# 1 Introduction

## 1.1 Matlab and XML

XML (EXtensible Markup Language) is designed to store complex datastructures in plain text format to provide a software- and hardware-independent way of structuring, storing and sharing data. Matlab R2006a offers some routines for processing XML documents but using these functions requires knowledge of Java and the Document Object Model (DOM).

## 1.2 Modelit XML toolbox for Matlab

The Modelit XML toolbox for Matlab aims to make XML functionality available to Matlab users without requiring extensive knowledge of Java or the Document Object Model. Although it provides easy access to many XML features, experienced users can still use their knowledge of Java and the Document Object Model to their advantage, as the toolbox supports features like XPath as well.

Where possible the Modelit XML toolbox for Matlab exploits the analogy between Matlab structures and XML documents to provide an intuitive access to XML data and provides the beginning user with the following features:

- Import and export data to XML format;
- Accessing XML data from the command prompt and Matlab m-files;
- Conversion of XML data to matlab structures;
- Visualizing the XML tree structure.

For the more demanding users, some advanced features are supported:

- Handling namespaces and attributes;
- Complete XPath syntax to extract information from XML documents;
- Transform XML documents to HTML.

## 1.3 Compatibility with Matlab versions

The Modelit XML toolbox for Matlab works with Matlab versions Matlab R2006b and above. The XML toolbox can also be used together with the Matlab compiler.

## 1.4 Downloading a trial version of the Modelit XML Toolbox

A free version of the Modelit XML toolbox for Matlab is available from our website, [www.modelit.nl](http://www.modelit.nl). This version has all functionalities of the Modelit XML toolbox but does not contain the m-files. Although your feedback is appreciated we cannot guarantee support on the free version.

## 2 Installation

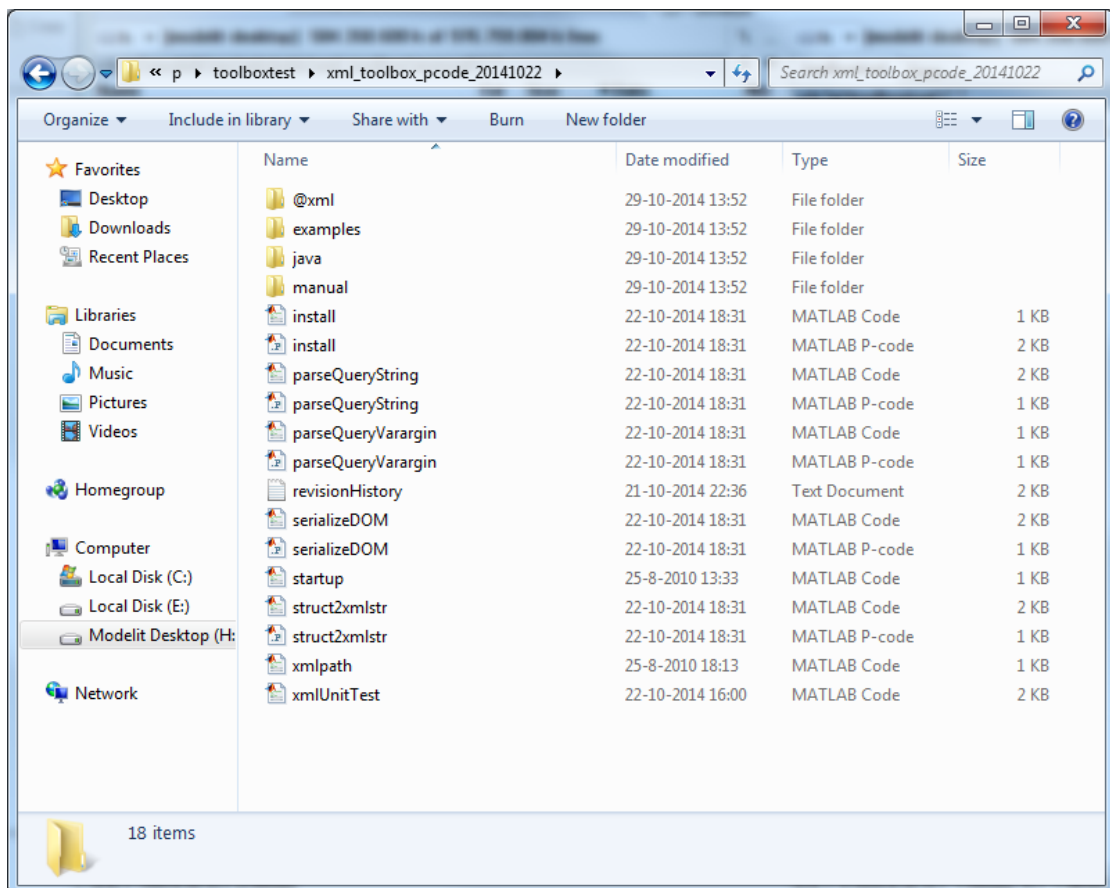
### 2.1 Quick verification of p-code version

Follow the steps below to verify that the XML Toolbox

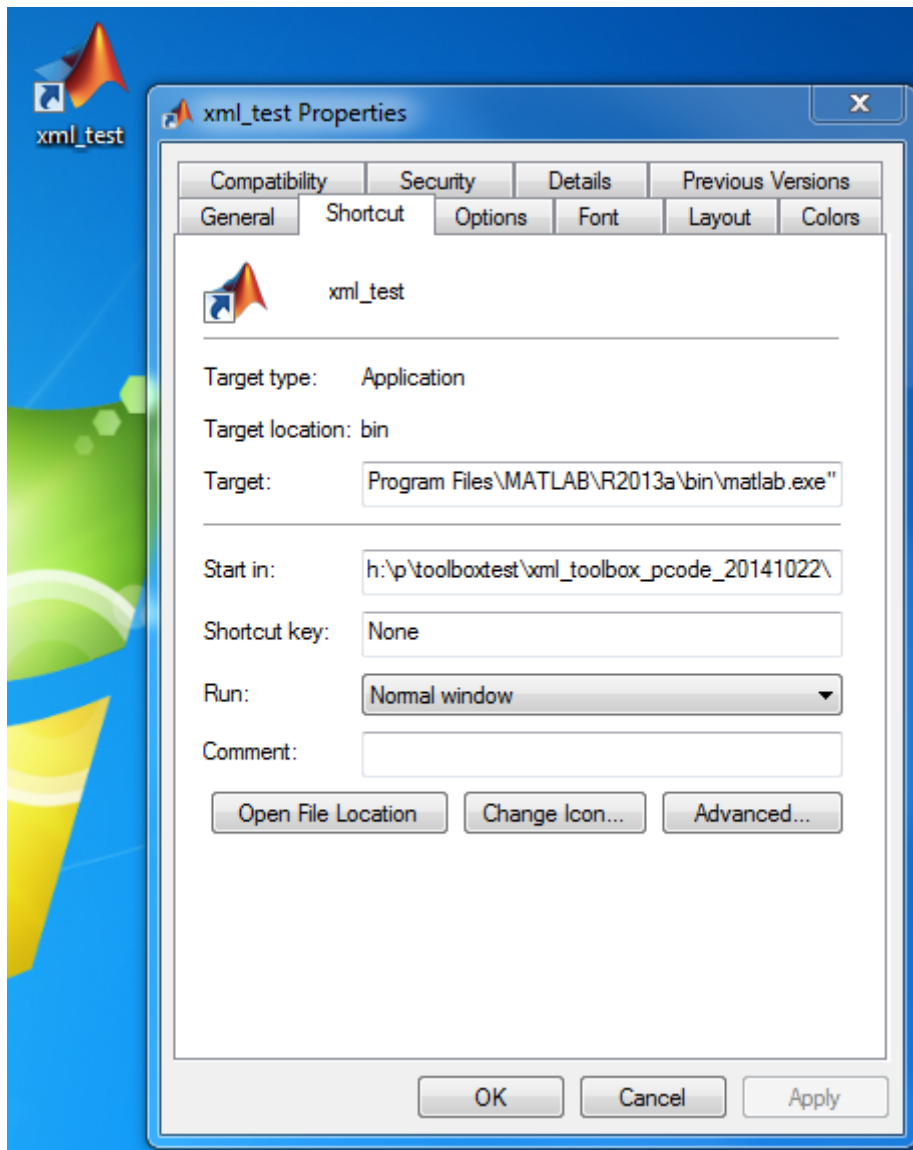
1. Download a recent p-code version from our site

[P-code version for Matlab 2012a](#) (last revision: 20141022)

2. Extract the zip file to a directory of your choice, for example  
h:\toolboxtest\xml\_toolbox\_pcode\_20141022:

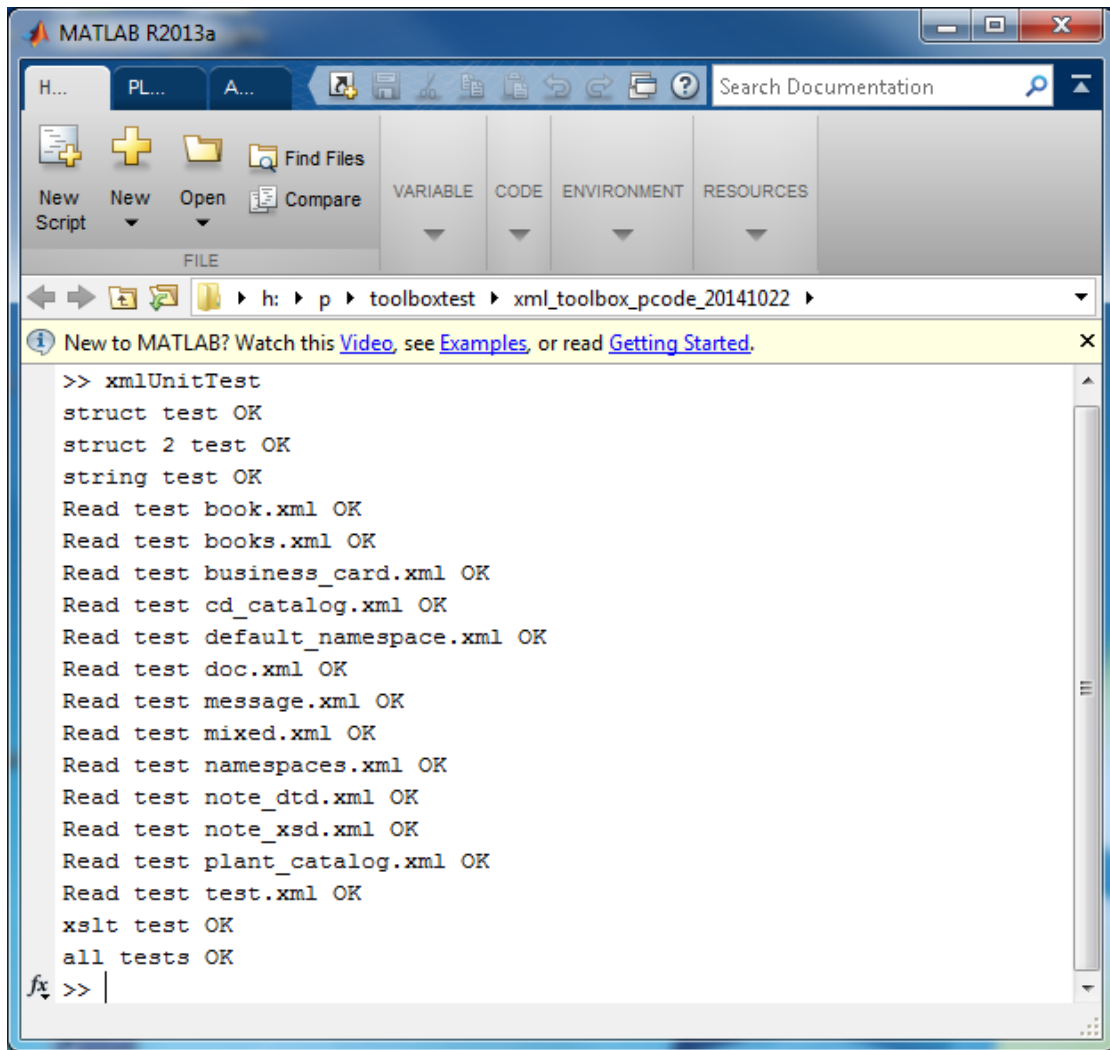


3. Create a startup icon that starts Matlab in this directory:



The toolbox contains a sample startup.m file that will be run in this cas.

4. Start Matlab, Run the verification script xmlUnitTest



## 2.2 Install instructions

The toolbox contains a number of m-files (or p-files) that should be in your Matlab path and a number of jar files that should be on your dynamic Java path. The steps below make sure both conditions are fulfilled.

1. Unzip the files from the XMLToolbox.zip file. This creates a folder 'xml\_toolbox\_mcode\_YYYYMMDD'. You may rename this directory to a name of your choice, for example 'xml\_toolbox'

We refer to the full path of this folder as XMLPATH.

2. Add the following lines to your startup.m file, with:

```
%Define toolbox location (adapt if needed)
XMLPATH='c:\userfiles\xml_toolbox';

%add to matlab path:
path(XMLPATH,path);
```



```
%add to dynamic JAVA class path:
javaaddpath([XMLPATH filesep 'java' filesep 'jaxen-full.jar' ]);
javaaddpath([XMLPATH filesep 'java' filesep 'Saxpath.jar' ]);
javaaddpath([XMLPATH filesep 'java' filesep 'xmltoolbox.jar' ]);
```

### 3. Restart Matlab.

## 2.3 Verify installation

The toolbox comes with a test script, xmlUnitTest.m

This test should run without error messages. Its typical output is:

```
>> xmlUnitTest
struct test OK
struct 2 test OK
string test OK
Read test book.xml OK
Read test books.xml OK
Read test business_card.xml OK
Read test cd_catalog.xml OK
Read test default_namespace.xml OK
Read test doc.xml OK
Read test message.xml OK
Read test mixed.xml OK
Read test namespaces.xml OK
Read test note_dtd.xml OK
Read test note_xsd.xml OK
Read test plant_catalog.xml OK
Read test test.xml OK
xslt test OK
all tests OK
```

## 2.4 Troubleshooting

A typical error that may occur is not setting the dynamic java path correctly. In this case xmlUnitTest will abort with an error:

```
>> xmlUnitTest
struct test OK
struct 2 test OK
Undefined variable "xmltoolbox" or class
"xmltoolbox.DefaultEntityResolver".
Error using xml (line 187)
Unable to build XML tree

Error in xmlUnitTest (line 22)
obj = xml(str);
```

If this error occurs you should check the lines containing “javaaddpath” in your startup.m script. Make sure that these are executed and that they point to the right directory.

## 2.5 Content of toolbox

The directory structure of the Modelit XML Toolbox for Matlab is shown in Figure 1 the following directories:

- **root,**  
The files in this directory are described in section 5.3
- **@xml (the XML-object)**  
The files in this directory are the methods of the XML-object are described in section 5.2
- **@xml/private**  
The files in this directory are the private methods of the XML-object and are described in section 5.3.1
- **examples**  
This directory contains example XML files, listed in section 6
- **java**  
Directory with the necessary java archives:
  - **Jaxen-full.jar**  
Contains the Jaxen API to the XPath engine, available from [www.jaxen.org](http://www.jaxen.org)
  - **Saxpath.jar**  
Contains java classes related to the event-based parsing and handling of XPath expressions, available from [www.jaxen.org](http://www.jaxen.org)
  - **xmltoolbox.jar**  
Contains java classes for visualizing XML DOM trees.



**Figure 1:** Directory structure of the XML toolbox

## 2.6 Dealing with large XML files: java heap space

The size of the XML documents that can be handled by the Modelit XML toolbox is limited by the available memory on the heap space of the Java Virtual Machine in which Matlab is active. This heap size can be increased by creating a `java.opts` file in the `$MATLAB/bin/$ARCH` (`$MATLAB` is the root directory and `$ARCH` is your system architecture), or in the current directory when you start Matlab, containing the following command:

```
-Xmx256M
```

This will make 256MB of JVM memory available, the parameter can be adjusted as needed. How to increase the Java Virtual Machine heap space is also explained in:

<http://www.mathworks.com/support/solutions/data/1-1812C.html?solution=1-1812C>

**Listing 1:** *java.opts* with heap size of 256 megabytes

```
-Xmx256M
```

### 3 Getting started with the Modelit XML toolbox for Matlab

#### 3.1 Introduction

Figure 2 illustrates the high-level functions in the XML-toolbox and how they can be used to convert between:

- XML documents - files that contain XML code;
- XML strings - Matlab character arrays that contain XML code;
- Matlab data structures - "Normal" Matlab variables;
- Matlab XML objects - a Matlab object created by the XML toolbox.

In many cases, these high-level functions will be all you need to access or store data in XML-format, and there is no need to read beyond this chapter. However, if you do, you will discover that the XML toolbox has many additional useful additional functions.

#### 3.2 On the analogy between XML and Matlab data structures

Both XML documents and Matlab structures are organized in a hierarchical way. The Modelit XML toolbox can map any Matlab data structure to an XML document. The opposite is not true. XML allows datasets that can't be converted to a Matlab structure by the Modelit XML toolbox. Typical constructs that cannot be converted are:

- XML attributes that are specified with a field;
- concatenations of dissimilar fields or structures;

XML document	Matlab structure
<ul style="list-style-type: none"> <li>• An XML document contains XML <i>elements</i>.</li> </ul>	<ul style="list-style-type: none"> <li>• A Matlab structure contains <i>fields</i></li> </ul>
<ul style="list-style-type: none"> <li>• The content of an element is enclosed by a start- and end <i>tag</i>.</li> </ul>	<ul style="list-style-type: none"> <li>• Each field has a <i>fieldname</i>.</li> </ul>
<ul style="list-style-type: none"> <li>• <i>Tags</i> can contain letters, numbers, and other characters;</li> <li>• <i>Tags</i> cannot start with a number or punctuation character;</li> <li>• <i>Tags</i> cannot start with the letters xml (or XML, or Xml, etc);</li> <li>• <i>Tags</i> cannot contain spaces.</li> </ul>	<ul style="list-style-type: none"> <li>• <i>Fieldnames</i> must begin with a letter, which may be followed by any combination of letters, digits, and underscores;</li> <li>• <i>Fieldnames</i> can have no more than 63 characters.</li> </ul>
<ul style="list-style-type: none"> <li>• An <i>element</i> can contain other elements, simple text or a mixture of both.</li> </ul>	<ul style="list-style-type: none"> <li>• A <i>field</i> can contain any Matlab data type.</li> </ul>
<ul style="list-style-type: none"> <li>• Elements with identical tags can be repeated;</li> </ul>	<ul style="list-style-type: none"> <li>• Any field can appear as an array;</li> </ul>
<ul style="list-style-type: none"> <li>• It is not required that repeated elements have identical structure: it is allowed to enumerate dissimilar structures</li> </ul>	<ul style="list-style-type: none"> <li>• All elements of an array must have the same class;</li> <li>• Additionally, if class equals "structure", all structures in an array must have the same set of fields.</li> </ul>
<ul style="list-style-type: none"> <li>• Only one instance of the top level element is allowed.</li> </ul>	<ul style="list-style-type: none"> <li>• This includes the top of the tree.</li> </ul>
<ul style="list-style-type: none"> <li>• <i>Elements</i> can have strings as</li> </ul>	<ul style="list-style-type: none"> <li>• <i>Fields</i> do not have explicit attributes</li> </ul>

attributes.	
<ul style="list-style-type: none"> <li>• <i>Elements</i> do not have implicit attributes</li> </ul>	<ul style="list-style-type: none"> <li>• Each field has its class (for example char, int, double) as an implicit attribute;</li> <li>• Each field has its size as an implicit attribute;</li> </ul>
<ul style="list-style-type: none"> <li>• The lowest level elements of an XML document contain a string</li> </ul>	<ul style="list-style-type: none"> <li>• The lowest level fields of a Matlab structure can be any Matlab data type except structure.</li> </ul>

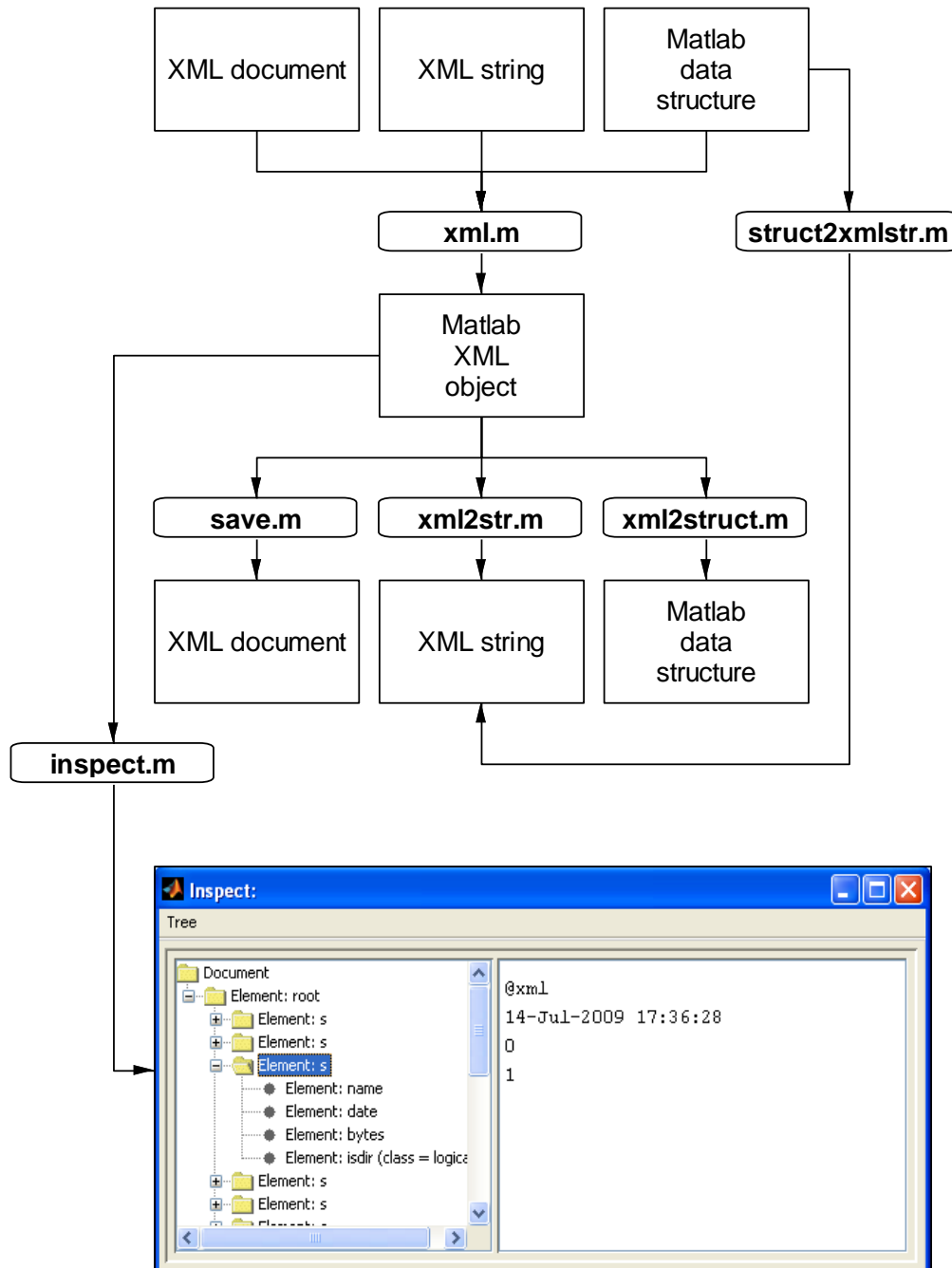
The command "S=xml2struct(xml(XMLFILE))" converts an XML dataset to an equivalent Matlab structure S and you can access all data using only the variable S.

In many cases the XML file will contain a dataset that cannot be mapped to a Matlab structure. In these case you will see the message:

```
>> xml2struct(xml('test.xml'))
??? Error using ==> xml.xml2struct
XML contents do not fit in Matlab structure
```

In these cases you can still access the XML data, but you will need to do this using the XML object:

```
>> s=xml('test.xml')
>> disp(s.fld)
```



**Figure 2:** Overview of the most popular uses of the toolbox

### 3.3 xml2str and struct2xmlstr

As shown in Figure 2, there are 2 routes to convert a Matlab structure to an XML string:

- The first way is to convert the Matlab structure to an XML object and then to invoke the method "xml2str". The equivalent command is:  
`str=xml2str(xml(S))`

The function `xml2str` relies on Java methods to map XML data to ASCII text.

- The second way is to use the function "struct2xmlstr". This function skips creation of an XML object and does the conversion directly. The function struct2xmlstr is designed primarily to be as fast as possible, and does not rely on any Java method.

The commands `xml2str(xml())` and `struct2xmlstr()` are similar but not fully equivalent. The main differences are:

- `struct2xmlstr` does not save the size of numeric arrays. `xml2str` saves the array size as an attribute.
- `struct2xmlstr` looks at the datatype to decide if a specific numeric value is saved with or without digits. `xml2str` looks at the actual value.

See section 3.4 for examples of Matlab variables converted to XML strings by `xml2str` and `struct2xmlstr`.

### **3.4 Saving Matlab data as XML: some examples**

The examples on the next page illustrate how the high level routines in the XML toolbox convert Matlab structures to XML code. The table is also used to illustrate the differences between the quick-and-dirty routine "struct2xmlstr" and the "official" implementation "xml2str".

Matlab code	Resulting XML after xml2str(xml(s))	Resulting XML after struct2xmlstr (s)
s.fld='stringvalue'	<pre>&lt;?xml version="1.0" encoding="ISO-8859-1"?&gt; &lt;root&gt;&lt;fld&gt;stringvalue&lt;/fld&gt;&lt;/root&gt;</pre>	
data(1,1).fld='stringvalue1'	<pre>&lt;?xml version="1.0" encoding="ISO-8859-1"?&gt; &lt;root&gt; &lt;data&gt;&lt;fld&gt;stringvalue1&lt;/fld&gt;&lt;/data&gt; &lt;data&gt;&lt;fld&gt;stringvalue2&lt;/fld&gt;&lt;/data&gt; &lt;/root&gt;</pre>	
data(1,2).fld='stringvalue2'		
s.data=data		
data(1,1).fld='stringvalue1'	<p><i>Note: array sizes of struct arrays are not stored in XML files</i></p>	
data(2,1).fld='stringvalue2'		
s.data=data		
s.fld={'aa','bb'};	<pre>&lt;?xml version="1.0" encoding="ISO-8859-1"?&gt; &lt;root&gt; &lt;fld&gt;aa&lt;/fld&gt; &lt;fld&gt;bb&lt;/fld&gt; &lt;/root&gt;</pre>	
s.fld=strvcat('aa','bb');	<pre>&lt;?xml version="1.0" encoding="ISO-8859-1"?&gt; &lt;root&gt; &lt;fld&gt;aa bb &lt;/fld&gt; &lt;/root&gt;</pre> <p><i>Note: multiline text arrays are stored line by line between a single pair of tags. Newline characters are included to separate lines.</i></p>	<pre>&lt;?xml version="1.0" encoding="ISO-8859-1"?&gt; &lt;root&gt; &lt;fld&gt;abab&lt;/fld&gt; &lt;/root&gt;</pre> <p><i>Note: multiline text arrays may not be stored as intended. You may want to convert the text arrays to cell arrays first to force correct behavior.</i></p>



s(1).fld='stringvalue1' s(2).fld='stringvalue2'	-Not possible-  <i>Note: This option is not implemented because a valid XML document can only have 1 root.</i>	<?xml version="1.0" encoding="ISO-8859-1"?> <root><fld>stringvalue1</fld></root> <root><fld>stringvalue2</fld></root>  <i>Note: struct2xmlstr ignores the fact that above structure has no unique root.</i>
s.fld= 12345678901234567890	<?xml version="1.0" encoding="ISO-8859-1"?> <root> <fld> 1234567890123456800</fld> </root>  <i>Note: xml2str prints numeric values with single or double precision with the %f or %.Of format specifier, depending on the actual value. Integer valued data are stored without digits, float valued data are stored with digits. In both cases a maximum of 17 significant numbers is printed.</i>	<?xml version="1.0" encoding="ISO-8859-1"?> <root> <fld> 1234567890123456800.000000</fld> </root>  <i>note: struct2xmlstr prints numeric values with single or double precision with the %f format specifier, regardless of the actual value. This implies 6 digits and a maximum of 17 significant numbers.</i>
s.fld=1:4	<?xml version="1.0" encoding="ISO-8859-1"?> <root> <fld size="1 4">1 2 3 4</fld> </root>  <i>Note: xml2str stores array sizes as an attribute.</i>	<?xml version="1.0" encoding="ISO-8859-1"?> <root> <fld>1.000000 2.000000 3.000000 4.000000</fld> </root>
s.fld=[1 2;3 4]	<?xml version="1.0" encoding="ISO-8859-1"?> <root> <fld size="2 2">1 2 3 4 </fld> </root>	<?xml version="1.0" encoding="ISO-8859-1"?> <root> <fld>1.000000 3.000000 2.000000 4.000000</fld> </root>
	<i>Note: xml2str exports a multiline numeric array line by</i>	<i>Note: struct2xmlstr only considers the number of</i>

	<i>line. Newline characters are included to separate lines.</i>	<i>elements in an array and ignores height and width attributes.</i>
s.fld=uint8(1:3)	<pre>&lt;?xml version="1.0" encoding="ISO-8859-1"?&gt; &lt;root&gt; &lt;fld&gt;1 2 3&lt;/fld&gt; &lt;/root&gt;</pre>	
s.fld=[1.1;pi]	<pre>&lt;?xml version="1.0" encoding="ISO-8859-1"?&gt; &lt;root&gt;&lt;fld size="2 1"&gt; 1.1 3.1416 &lt;/fld&gt;&lt;/root&gt;</pre>	<pre>&lt;?xml version="1.0" encoding="ISO-8859-1"?&gt;&lt;root&gt; &lt;fld&gt;1.100000 3.141593&lt;/fld&gt;&lt;/root&gt;</pre>
s.fld=[]	<pre>&lt;?xml version="1.0" encoding="ISO-8859-1"?&gt; &lt;root&gt; &lt;fld/&gt; &lt;/root&gt;</pre>	
s.fld=""		
<i>Note: all empty arrays are stored in the same way regardless of their type.</i>		

## 4 Tutorial

If you only need to access and manipulate XML documents it is sufficient to read sections 4.1, 4.2, 4.3 and 4.4. The remaining sections describe more advanced or specific features of the Modelit XML toolbox.

### 4.1 The XML object

All functions in the Modelit XML toolbox are implemented through the XML object. This object contains the XML document in the form of a Java Document Object Model (DOM). The methods for accessing and manipulating the XML contents are such that from the outside world the XML object looks and acts like a normal Matlab structure.

An XML object can be created with the command `xml` which has the following syntax, see Listing 2 and section 5.1.1.

**Listing 2:** Syntax of the XML-object constructor

```
Obj = xml(FileName, isNamespaceAware)
```

The second input argument (`isNamespaceWare`) is discussed in section 4.7. The first input argument (`FileName`) can be one of the following types:

- **Empty**

An empty XML object will be created, see Listing 3.

**Listing 3:** Construction of an XML object with no input arguments

```
>> obj = xml

xml-object (root: root)
number of nodes: 1
<no fields available>
```

- **File**

The easiest way to create an XML object is from an XML file, the input argument is then either a string with the location of the XML file or a `java.io.File`, see Listing 4.

**Listing 4:** Construction of an XML object from an XML file

```
>> obj = xml(fullfile(pwd, 'examples', 'books.xml'))

xml-object (root: bookstore)
number of nodes: 25
fieldnames:
- book (4)

>> obj = xml(java.io.File(fullfile(pwd, 'examples', 'books.xml')))

xml-object (root: bookstore)
number of nodes: 25
fieldnames:
- book (4)
```

- **XML string**

An XML object can be created directly from an XML string, see Listing 5.

**Listing 5:** Construction of an XML object directly from an XML string

```
>> str = '<book><title>Harry Potter</title><author>J.K.Rowling</author></book>'
>> obj = xml(str)

xml-object (root: book)
number of nodes: 3
fieldnames:
- author (1)
- title (1)
```

- **Matlab structure**

a standard Matlab structure or struct array can be converted to an XML object. Matlab objects will first be converted to Matlab structures and then converted to an XML object, see Listing 6

**Listing 6:** Construction of an XML object from a Matlab structure

```
>> S = dir
>> obj = xml(S)

xml-object (root: root)
number of nodes: 41
fieldnames:
- bytes (10)
- date (10)
- isdir (10)
- name (10)
```

- **Java inputstream**

it is possible to create an XML object from an Java inputstream, this can be useful with for example web services, see Listing 7

**Listing 7:** Creating an XML object from an java inputstream

```
>> obj = xml(java.io.FileInputStream((fullfile(pwd,'examples','books.xml'))))

xml-object (root: bookstore)
number of nodes: 25
fieldnames:
- book (4)
```

- **Java DOM object**

the core of the XML object is a DOM representation of an XML document, the XML object can therefore directly be constructed from a DOM object. This DOM object can also be constructed with the Matlab command `xmlread`, see Listing 8

**Listing 8:** Construction of an XML object from a java DOM object

```
>> DOM = xmlread(fullfile(pwd,'examples','books.xml'));
>> obj = xml(DOM)

xml-object (root: bookstore)
number of nodes: 25
fieldnames:
- book (4)
```

When an XML object is constructed the following information is displayed:

- **The name of the root node**  
an XML document always has a unique root node, the name of the root node is sometimes necessary when using XPath, see section 4.8.
- **Total number of nodes**  
of which the tree representation of the XML document consists.
- **The names of the nodes**  
which appear directly under the root node plus the number of times they occur. These names can be used by the user to access and manipulate the XML content, see section 4.2.

Furthermore an XML object consists of three fields, these fields can be accessed and manipulated with the XML object get and set methods, see sections 5.2.20 and 5.2.21:

- **DOM**  
the tree representation of the XML document.
- **File**  
the name of the source file from which the XML object was created or the name of the file to which the XML object was saved to.
- **NS**  
the namespaces, see section 4.7.

## 4.2 Accessing and manipulating data

To the outside world the XML-object appears to be a normal Matlab structure and accessing en manipulating data happens in the same way. With some minor differences:

### 1. The return value is a cell array

it is possible that the return values consist of different types, because Matlab cannot handle arrays with mixed element types the return values are wrapped in a cell array, see Listing 9 for an example in which two element of different type are returned.

**Listing 9:** Returning of mixed element types from an XML object

```
>> obj = xml(fullfile(pwd, 'examples', 'mixed.xml'))
>> items = obj.item;
>> items{:}

xml-object (root: root)
number of nodes: 7
fieldnames:
- ARTIST (1)
- COMPANY (1)
- COUNTRY (1)
- PRICE (1)
- TITLE (1)
- YEAR (1)

xml-object (root: root)
number of nodes: 5
fieldnames:
- author (1)
- price (1)
- title (1)
- year (1)
```

2. **Invalid Matlab field names can be used in combination with XML objects**  
by wrapping them in ('...'), e.g. the invalid Matlab field ('a-b')
3. **multi-level indexing is possible**  
statements such as 'books(3:4).author' are valid

**Listing 10: Accessing data in an XML object**

```
>> books = xml(fullfile(pwd, 'examples', 'books.xml'))
>> books = obj.book

books =

    [1x1 xml]
    [1x1 xml]
    [1x1 xml]
    [1x1 xml]

>> books{1}

xml-object (root: root)
number of nodes: 5
fieldnames:
- author (1)
- price (1)
- title (1)
- year (1)
```

Besides retrieving contents from an XML object it is also possible to manipulate the XML contents in the same way as the data that is stored in a Matlab structure can be manipulated. If necessary extra fields will be added to the XML object, see for example Listing 11. The following types can be added to an XML object:

- **XML object**  
it is possible to add another XML object to a field in the XML object, the two XML objects will then be combined into one single XML object, see Listing 11.

**Listing 11: Add an XML object to an XML object**

```
>> books = xml(fullfile(pwd, 'examples', 'books.xml'));

xml-object (root: bookstore)
number of nodes: 25
fieldnames:
- book (4)

>> book = xml(fullfile(pwd, 'examples', 'book.xml'))

xml-object (root: root)
number of nodes: 6
fieldnames:
- author (2)
- price (1)
- title (1)
- year (1)

>> books.book(5) = book

xml-object (root: bookstore)
number of nodes: 31
fieldnames:
- book (5)
```

- **String**

it is possible to add a string or an array of strings to an XML object, see Listing 12.

**Listing 12:** *Add a string to an XML object*

```
>> obj = xml;
>> obj.string = 'string';
>> obj.array = strvcat('line 1','line 2')

xml-object (root: root)
number of nodes: 3
fieldnames:
- array (1)
- string (1)
```

- **Number**

A number or matrix can also be added to an XML object, if the matrix is sparse it will be converted to a full matrix, see Listing 13.

**Listing 13:** *Add a number of matrix to an XML object*

```
>> obj = xml;
>> obj.number = 123;
>> obj.matrix = rand(3);
>> obj.sparse = speye(3)

xml-object (root: root)
number of nodes: 4
fieldnames:
- matrix (1)
- number (1)
- sparse (1)
```

- **Matlab structure**

A Matlab structure or structarray will be converted to an XML object and then added to the XML object. Matlab objects will be converted to Matlab structures and then added to the XML object, Java objects will be converted to strings and then added to the XML objects.

**Listing 14:** *Adding structures to an XML object*

```
>> obj = xml;
>> obj.dir = dir;
>> obj.java = javax.swing.JButton

xml-object (root: root)
number of nodes: 43
fieldnames:
- dir (1)
- java (1)
xml-object (root: root)
number of nodes: 6
fieldnames:
- author (2)
- price (1)
- title (1)
- year (1)

>> books.book(5) = book

xml-object (root: bookstore)
number of nodes: 31
fieldnames:
- book (5)

>> inspect(books)
```

- **Matlab cell array**

it is not possible to add a cell array to an XML object, just add the cell contents separately to the XML object.

With the function `isfield` (see section 5.2.7) it can be checked if a certain field exists in an XML document, similarly with the function `rmfield` (see section 5.2.9) fields can be removed from the XML document. The two functions are similar to the Matlab equivalents with the difference that the path to the field must be a string expression, see Listing 15.

**Listing 15:** Removing a field from an XML object

```
>> books = xml(fullfile(pwd, 'examples', 'books.xml'))
>> isfield(books, 'book(1).author')
ans =
     1
>> rmfield(books, 'book(1).author');
>> isfield(books, 'book(1).author')
ans =
     0
```

### 4.3 Viewing the XML content

The XML contents of an XML object can be viewed by the user in two different formats:

1. **Plain ASCII**

the `view` method of the XML object displays the XML content on the console, see Listing 16 for an example.

**Listing 16:** View XML contents.

```
>> obj = xml(fullfile(pwd, 'examples', 'book.xml'));
>> view(obj)

<?xml version="1.0" encoding="ISO-8859-1"?>
<book category="MATHS">
<title lang="en">Probability and Random Processes</title>
<author>G.R. Grimmett</author>
<author>D.R. Stirzaker</author>
<year>1992</year>
<price>39.00</price>
</book>
```

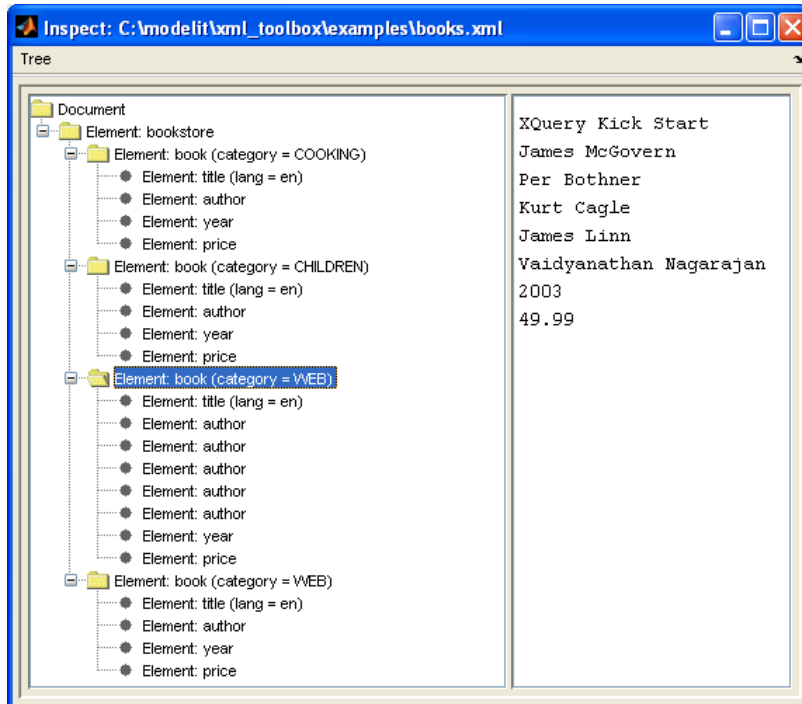
2. **Tree structure**

the `inspect` method of the XML object displays the XML content in a separate window as a navigable tree structure, see Figure 3 for an example.

**Listing 17:** Inspect XML contents.

```
>> obj = xml(fullfile(pwd, 'examples', 'books.xml'));
>> inspect(obj)
```

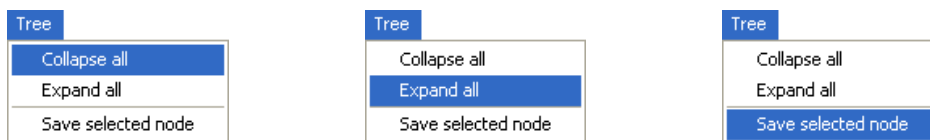




**Figure 3:** Inspection of the tree structure of an XML document.

Three actions can be selected in the 'Tree'-menu in the menu bar on the top of the XML structure inspector:

1. ***Collapse all***  
collapse the entire XML tree to one single node
2. ***Expand all***  
expand the entire XML tree, so all nodes are visible
3. ***Save selected node***  
save the selected node and its subnodes to an XML file



**Figure 4:** Choices in the 'Tree'-menu in the XML structure inspector.

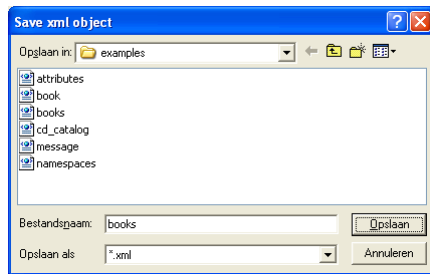
## 4.4 Saving the XML content

The XML content of an XML object can be saved to an XML file by using the save method of the XML object, see Listing 18.

**Listing 18:** Saving an XML object.

```
>> obj = xml                %create an empty xml object
>> obj.date = datestr(now)  %add fields with values
>> obj.description = 'test'
>> obj = save(obj,'test.xml') %save object by specifying filename
```

A save dialog will appear if the second input argument of the save method is not specified, see Figure 5:



**Figure 5:** Save dialog.

The save method returns an updated XML object in which the name of the specified file is stored. The current filename can be retrieved with the get method of the XML object, see Listing 19.

**Listing 19:** Retrieve the filename of an XML object.

```
get(obj,'file')

ans =

c:\modelit\xml_toolbox\test.xml
```

## 4.5 Transforming an XML document with a stylesheet

XML was created to store data. No information about how to display this data is included in the XML document itself. By separating the style from the content the same data can be presented in different ways.

XSLT (Extensible Stylesheet Language Transformations) can be used to display an XML document by transforming it to another XML document, or another type of document that is recognized by a browser, like HTML and XHTML. With XSLT elements and attributes can be added or removed from the output file, elements can be rearranged, tests can be performed and decisions can be made about which elements to hide and display. See <http://www.w3schools.com/xsl/> for more information.

By using the xslt method of the XML-object an XML document can be transformed into an HTML document which can be displayed in a browser by using the Matlab command 'web'. See Listing 20 and Figure 6.

**Listing 20:** Transforming XML to HTML.

```
>> obj = xml(fullfile(pwd,'examples','cd_catalog.xml'))
>> S = xslt(obj,fullfile(pwd,'examples','cd_catalog.xsl'))

S =

<html>
  <body>
    <h2>My CD Collection</h2>
    <table border="1">
      <tr bgcolor="#9acd32">
        <th>Title</th>
        <th>Artist</th>
      </tr>
    </table>
```

```

</body>
</html>

>> web(['text://' S], '-new', '-notoolbar');

```



Figure 6: The *cd\_catalog.xml* transformed to HTML

## 4.6 Using attributes

XML elements can have attributes which can provide additional information about elements. While data is normally stored as elements, metadata (information about the data) is usually stored as attributes of elements. Listing 21 shows how attributes are added to the elements in an XML document.

Listing 21: An XML document with attributes

```

<?xml version="1.0" encoding="ISO-8859-1"?>
<book category="MATHS">
  <title lang="en">Probability and Random Processes</title>
  <author>G.R. Grimmett</author>
  <author>D.R. Stirzaker</author>
  <year>1992</year>
  <price>39.00</price>
</book>

```

In the XML toolbox attributes can be accessed and manipulated in the same way as 'normal' elements, by using the symbol '@' to indicate that there is been referred to

an attribute. As the '@' symbol is a reserved Matlab symbol it is necessary to put quotes and parentheses around it, see Listing 22.

**Listing 22:** *retrieving attribute values*

```
>> book = xml(fullfile(pwd, 'examples', 'book.xml'));
>> category = book.('@category')

category =

    'MATHS'

>> lang = book.title.('@lang')

lang =

    'en'

>> book.title.('@lang') = 'es';
>> lang = book.title.('@lang')

lang =

    'es'
```

Attributes can be removed from the XML object in the same way as described in 4.2 with the command `rmfield`, see Listing 23.

**Listing 23:** *removing an attribute from an XML object*

```
>> book = xml(fullfile(pwd, 'examples', 'book.xml'));
>> lang = book.title.('@lang')

lang =

    'en'

>> rmfield(book, 'title.@lang');
>> lang = book.title.('@lang')

lang =

    Empty cell array: 0-by-1
```

## 4.7 Using namespaces

Since element names in XML are not predefined, a name conflict can occur when the same element name is used to describe different content and definitions. For example the element name `<table>` to describe a piece of furniture and to describe a collection of data. This conflict can be solved by using namespace prefixes to distinguish different types of elements with the same name. This namespace prefix is placed as an attribute in the start tag of an element and has the following syntax:

**Listing 24:** *namespace definition with the `xmlns` attribute*

```
xmlns:namespace-prefix="namespaceURI"
```

All child elements with the same prefix are then associated with the same namespace. The only purpose of the string ("namespaceURI") is to identify the namespace with a unique name and often companies use the namespace as a pointer to a real Web page containing information about the namespace. In Listing 25

two namespace prefixes are defined, 'ns' and 'nsdim', with definitions 'http://www.w3schools.com/furniture' and 'http://www.modelit.nl/dimension' respectively.

**Listing 25:** An XML document with namespaces

```
<?xml version="1.0" encoding="ISO-8859-1"?>
<table xmlns:ns="http://www.w3schools.com/furniture"
xmlns:nsdim="http://www.modelit.nl/dimension">
  <ns:name>African Coffee Table</ns:name>
  <width nsdim:dim="centimeter">80</width>
  <length nsdim:dim="meter">1.20</length>
</table>
```

The XML document of Listing 25 can be parsed by the `xml` command by setting the second argument (`isNameSpaceWare`) to true, see Listing 26.

**Listing 26:** Parsing an XML document with namespaces

```
>> obj = xml(fullfile(pwd, 'examples', 'namespaces.xml'), 1);
```

In order to retrieve the value of the 'name' element (which is in the namespace defined by the prefix 'ns') the XML-object needs to know what the namespace definition of 'ns' is, for example in the XML document of Listing 25 the namespace prefix 'ns' means 'http://www.w3schools.com/furniture'. There are five functions available in the XML toolbox to handle namespace definitions:

- ***addns*** (see section 5.2.15)  
add a namespace definition to the XML object's collection of namespace definitions. In Listing 27 for example the prefix 'ns' is given the definition 'http://www.w3schools.com/furniture' and the prefix 'nsdim' is given the definition 'http://www.modelit.nl/dimension'.

**Listing 27:** add namespace definitions to the XML object

```
>> obj = addns(obj, {'ns', 'http://www.w3schools.com/furniture'});
>> obj = addns(obj, {'nsdim', 'http://www.modelit.nl/dimension'});
```

- ***listns*** (see section 5.2.16)  
display the defined namespaces for the XML object, in Listing 28 the namespace definitions which were added in the previous step are listed.

**Listing 28:** display the defined namespaces in an XML object

```
>> listns(obj)
nsdim --> http://www.modelit.nl/dimension
ns      --> http://www.w3schools.com/furniture
```

- ***getns*** (see section 5.2.19)  
retrieve the namespace definition of a namespace prefix, in Listing 29 the namespace definition for the prefix 'ns' is retrieved.

**Listing 29:** retrieval of the namespace definition of the 'ns' prefix

```
>> getns(obj, 'ns')

ans =
```

```
http://www.w3schools.com/furniture
```

- **removens** (see section 5.2.18)  
remove a namespace definition from the XML's collection of namespace definitions. In Listing 30 the namespace definition for the prefix 'ns' is removed.

**Listing 30:** *remove the namespace definition 'ns'*

```
>> obj = removens(obj,'ns')
```

- **clearns** (see section 5.2.17)  
remove all namespace definitions from the XML object's collection of namespace definitions, see Listing 31.

**Listing 31:** *remove all namespace definitions*

```
obj = clearns(obj)
```

Now the XML contents can be accessed and manipulated much the same way as described in section 4.2 just by adding the defined namespace prefix and colon to the fieldnames, see Listing 32.

**Listing 32:** *Accessing an XML document with namespaces*

```
>> obj = xml(fullfile(pwd,'examples','namespaces.xml'),1)

xml-object (root: table)
number of nodes: 4
fieldnames:
- length (1)
- ns:name (1)
- width (1)

>> addns(obj,{'ns','http://www.w3schools.com/furniture'})
>> addns(obj,{'nsdim','http://www.modelit.nl/dimension'})
>> listns(obj)
nsdim --> http://www.modelit.nl/dimension
ns      --> http://www.w3schools.com/furniture
>> name = obj.('ns:name')

name =

    'African Coffee Table'

>> obj.length.('@nsdim:dim')

ans =

    'meter'
```

In some cases an XML document contains so-called default namespaces, see Listing 33 for an example.

**Listing 33:** *An XML document with default namespaces*

```
<?xml version="1.0" encoding="ISO-8859-1"?>
<table xmlns="http://www.w3schools.com/furniture">
  <name>African Coffee Table</name>
  <width>80</width>
```

```
<length>1.20</length>
</table>
```

A namespace is defined as an xmlns attribute in an element, but without a prefix. All child nodes will be automatically associated with that default namespace and takes away the node to use prefixes in all the child elements.

**Listing 34:** definition of a default namespace

```
xmlns="namespaceURI"
```

The contents of an XML document with default namespaces can be accessed and manipulated by adding a dummy namespace prefix and using this prefix in the fieldname as the XML object needs to know in what namespace it should look. Accessing and manipulating the XML contents is then the same as described before.

**Listing 35:** Accessing contents in an XML document with default namespaces I

```
>> obj = xml(fullfile(pwd,'examples','default namespace.xml'));
>> obj = addns(obj,{'ns','http://www.w3schools.com/furniture'});
>> obj.('ns:name')

ans =

    'African Coffee Table'
```

Another possibility to access and manipulate XML contents in document with default namespaces is to construct the XML object with the second argument (isNameSpaceWare) of the constructor set to false and then follow the same steps as described in section 4.2, thus without using any namespace prefixes, see Listing 36.

**Listing 36:** Accessing contents in an XML document with default namespaces II

```
>> obj = xml(fullfile(pwd,'examples','default namespace.xml'),0)

xml-object (root: table)
number of nodes: 4
fieldnames:
- length (1)
- name (1)
- width (1)
>> obj.name

ans =

    'African Coffee Table'
```

## 4.8 Using XPath

XPath is a syntax for navigating through the elements and attributes inside XML documents in order to extract specific information. XPath uses path expressions to select nodes or node-sets in an XML document. These path expressions are similar to the expressions which are used to access the content in Matlab structures.

In Table 1 a short overview of XPath symbols is given. This overview is only a small subset of all the possibilities of XPath in the XML toolbox. The XML object is constructed in such way that the complete set of XPath functionalities can be used. See <http://www.w3schools.com/xpath> for more information about how to use XPath.

**Table 1:** XPath symbols

XPath symbol	Description	Example
<i>nodename</i>	Select all child nodes of the node	Listing 37
/	Select nodes in the document that match the expression	Listing 37
//	Select nodes in the document that match the expression no matter where they are	Listing 43
*	Wildcard	Listing 42
[ ]	Predicate, to specify a condition which has to be met for a node to be selected	Listing 39 Listing 40 Listing 41
@	Select attributes	Listing 42
position(), last()	Node index	Listing 38

**Listing 37:** Select all books with an XPath expression

```
>> bookstore = xml(fullfile(pwd, 'examples', 'books.xml'))
>> books = xpath(obj, '/bookstore/book')

books =

    [1x1 xml]
    [1x1 xml]
    [1x1 xml]
    [1x1 xml]
```

**Listing 38:** Select only the title of the first and last book with an XPath expression

```
>> bookstore = xml(fullfile(pwd, 'examples', 'books.xml'))
>> titles = xpath(obj, '/bookstore/book[position() = 1 | position() = last()]/title')

titles =

    'Everyday Italian'
    'Learning XML'
```

**Listing 39:** Select only the book with title 'Harry Potter' with an XPath expression

```
>> bookstore = xml(fullfile(pwd, 'examples', 'books.xml'))
>> book = xpath(obj, '/bookstore/book[title='Harry Potter']')

book =

    [1x1 xml]
```

**Listing 40:** Select only the books which are over 35 euro with an XPath expression

```
>> bookstore = xml(fullfile(pwd, 'examples', 'books.xml'))
>> books = xpath(bookstore, '/bookstore/book[price>35]')

books =

    [1x1 xml]
    [1x1 xml]
```



**Listing 41:** *Select the titles of the books over 35 euro with an XPath expression*

```
>> bookstore = xml(fullfile(pwd, 'examples', 'books.xml'))
>> titles = xpath(bookstore, '/bookstore/book[price>35]/title')

titles =

    'XQuery Kick Start'
    'Learning XML'
```

**Listing 42:** *Select all attributes with an XPath expression*

```
>> bookstore = xml(fullfile(pwd, 'examples', 'books.xml'))
>> xpath(bookstore, '//*[@*')

xml-object (root: root)
number of nodes: 5
fieldnames:
- author (1)
- price (1)
- title (1)
- year (1)
```

**Listing 43:** *Select all authors of all books with an XPath expression*

```
>> bookstore = xml(fullfile(pwd, 'examples', 'books.xml'))
>> authors = xpath(bookstore, '//author')

authors =

    'Giada De Laurentiis'
    'J K. Rowling'
    'James McGovern'
    'Per Bothner'
    'Kurt Cagle'
    'James Linn'
    'Vaidyanathan Nagarajan'
    'Erik T. Ray'
```

It is also possible to change the XML contents in the XML object by using an XPath expression, the only restriction is that no new fields can be created. The XPath expression must thus return one or more elements of the XML document. Listing 44 is a good example of how XPath expression can be used to manipulate the XML contents of an XML object.

**Listing 44:** *Change the prices of the books 35 euro to 40 euro*

```
>> books = xml(fullfile(pwd, 'examples', 'books.xml'));
>> books = xpath(books, '/bookstore/book[price>35]/price', 40);
>> books.book.price

ans =

    '30.00'
    '29.99'
    '40'
    '40'
```

The function `isfield` (see section 5.2.7) and `rmfield` (see section 5.2.9) can also be used in combination with XPath expressions, see for example Listing 45.

**Listing 45:** *Remove the books which are over 35 euro*

```
>> bookstore = xml(fullfile(pwd,'examples','books.xml'));
>> isfield(bookstore, '/bookstore/book[price>35]')

ans =

     1

>> rmfield(bookstore, '/bookstore/book[price>35]');
>> isfield(bookstore, '/bookstore/book[price>35]')

ans =

     0
```

## 5 Function references

### 5.1 Constructor

#### 5.1.1 xml

**Listing 46:** *xml*

```
xml - constructor for an xml-object

CALL:
  obj = xml(FileName,isNameSpaceAware)

INPUT:
  FileName:      <string> name of the sourcefile
                  <string> the xml string
                  <java-object> with a D(ocument) (O)bject (M)odel
                  <struct> a Matlab structure
  isNameSpaceAware: <boolean> (optional) (default == 1) use namespaces

OUTPUT:
  obj: <xml-object> with fields:
        - DOM: <java object> the DOM object
        - file: <string> the name of the xml source
        - NS:   <java object> a hashmap with namespace
                  definitions
        N.B. obj is empty when an error occurred

See also: xml/view, xml/inspect
```

### 5.2 Methods of the xml-object

#### 5.2.1 view (has been superseded by xml2str)

**Listing 47:** *view*

```
view - convert the xml-object into a string

CALL:
  view(obj)

INPUT:
  obj:      <xml-object>

OUTPUT:
  S:      <string> with the xml-document

EXAMPLE:
  %create an xml from a sourcefile
  obj = xml(fullfile(pwd,'examples','books.xml'))
  view(obj)

See also: xml, xml/save, xml/inspect
```

## 5.2.2 xml2str

**Listing 48:** *view*

```
xml2str - convert the xml-object into a string

Note: This method replaces the method "view"
      the method view is kept for backward compability

CALL:
xml2str(obj)
S=xml2str(obj)

INPUT:
obj:      <xml-object>

OUTPUT:
S:        <string> with the xml-document

EXAMPLE:
%create an xml from a sourcefile
obj = xml(fullfile(pwd,'examples','books.xml'))
xml2str(obj)

See also: xml, xml/save, xml/inspect
```

## 5.2.3 inspect

**Listing 49:** *inspect*

```
inspect - visualize the xml document as a tree in a separate window

CALL:
inspect(obj)

INPUT:
obj: <xml-object>

OUTPUT:
none, the DOM representation of the xml document appears as a tree
      in a separate window

See also: xml, xml/view
```

## 5.2.4 display

**Listing 50:** *display*

```
display - display information about an xml-object on the console

CALL:
display(obj)

INPUT:
obj: <xml-object>

OUTPUT:
none, information about the xml-object is displayed on the console

See also: xml, display
```

## 5.2.5 save

### Listing 51: save

```

save - save the xml-object as an xml file

CALL:
  obj = save(obj, fname)

INPUT:
  obj: <xml-object>
  fname: <string> (optional) the name of the xml file, if fname is not
          specified a save dialog will pop up

OUTPUT:
  obj: <xml-object> the file field of the xml-object is updated and an xml
          file is created

See also: xml, xml/view, xml/inspect

```

## 5.2.6 fieldnames

### Listing 52: fieldnames

```

fieldNames - get the names of the direct children of the root node
              c.f. the function fieldnames for structures

CALL:
  fields = fieldnames(obj)

INPUT:
  obj: <xml-object>

OUTPUT:
  fields: <cellstring> with the nodenames of the children of the root node

See also: xml, xml/getRoot, xml/noNodes, xml/isfield

```

## 5.2.7 isfield

### Listing 53: isfield

```

isfield - true if at least one node satisfies the indexing 'sub'

CALL:
  tf = isfield(obj, field)

INPUT:
  obj: <xml-object>
  sub: <string> index into xml document (same format as indexing into
          Matlab structures) e.g. 'book(1)' or 'book(1).title'
          result in the same substructs as would be obtained if
          S.book(1) or S.book(1).title were used (S a Matlab
          structure)
          <string> with xpath expression

OUTPUT:
  tf: <boolean> true if at least one node satisfies the indexing 'sub'

See also: xml, xml/fieldNames, xml/rmfield

```

### 5.2.8 isempty

**Listing 54:** *isempty*

```
isempty - true if the xml-object has no fields

CALL:
    tf = isempty(obj)

INPUT:
    obj: <xml-object>

OUTPUT:
    tf: <boolean> true if the DOM representation of the xml document does
           not contain any nodes, or equivalently the xml-document
           has no fields

See also: xml, xml/noNodes, xml/fieldnames, xml/getRoot
```

### 5.2.9 rmfield

**Listing 55:** *rmfield*

```
rmfield - remove elements and attributes from an xml-object which satisfy
           the indexing 'sub'

CALL:
    rmfield(obj,sub)

INPUT:
    obj: <xml-object>
    sub: <string> index into xml document (same format as indexing into
           Matlab structures) e.g. 'book(1)' or 'book(1).title'
           result in the same substructs as would be obtained if
           S.book(1) or S.book(1).title were used (S a Matlab
           structure)
           <string> with xpath expression

OUTPUT:
    none, the xml-object is updated

See also: xml, xml/fieldNames, xml/isfield
```

## 5.2.10 xpath

**Listing 56:** *xpath*

```
xpath - carry out a set or get for an xml-object using xpath syntax

CALL:
  S = xpath(obj,ind,data)

INPUT:
  obj: <xml-object>
  ind: <struct array> with fields
        - type: one of '.' or '()'
        - subs: subscript values (field name or cell array
              of index vectors)
        <string> with an xpath expression
  data: (optional) with the values to be put in the by ind defined
        fields in the xml-object, allowed types:
        - <struct> matlab structure
        - <xml-object>
        <org.apache.xerces.dom.ElementNSImpl>
        <org.apache.xerces.dom.ElementImpl>

OUTPUT:
  S: <cell array> in nargin == 2 (get is used)
     <xml-object> if nargin == 3 (set is used)

See also: xml, xml/set, xml/get, xml/subsref, xml/subsasgn,
xml/private/buildXPath
```

## 5.2.11 subsasgn

**Listing 57:** *subsasgn*

```
subsasgn - assign new values to the xml document in an xml-object

CALL:
  obj = subsasgn(obj,ind,data)

INPUT:
  obj: <xml-object>
  ind: <struct array> with fields
        - type: one of '.' or '()'
        - subs: subscript values (field name or cell array
              of index vectors)
        <string> with an xpath expression
  data: (optional) with the values to be put in the by ind defined
        fields in the xml-object, allowed types:
        - <struct> matlab structure
        - <xml-object>
        - <org.apache.xerces.dom.ElementImpl>

OUTPUT:
  obj: <xml-object>

See also: xml, xml/subsref, xml/xpath, subsasgn
```

## 5.2.12 subsref

**Listing 58:** *subsref*

```
subsref - subscripted reference for an xml object

CALL:
  S = subsref(obj,ind)

INPUT:
  obj: <xml-object>
  ind: <struct array> with fields
        - type: one of '.' or '()'
        - subs: subscript values (field name or cell array
          of index vectors)
        <string> with an xpath expression

OUTPUT:
  S: <cell array> with contents of the referenced nodes, can contain
    xml objects, strings or numbers

See also: xml, xml/subsasgn, xml/xpath, subsref
```

## 5.2.13 selectNodes

**Listing 59:** *selectNodes*

```
selectNodes - select nodes from the XML DOM tree

CALL:
  nodeList = selectNodes(obj,ind)

INPUT:
  obj: <xml-object>
  ind: <struct array> with fields
        - type: one of '.' or '()'
        - subs: subscript values (field name or cell array
          of index vectors)
        <string> with an xpath expression

OUTPUT:
  nodeList: <java object> java.util.ArrayList with tree nodes

See also: xml, xml/xpath, xml/subsref, xml/subsasgn,
  xml/private/buildXPath
```

## 5.2.14 xslt

**Listing 60:** *xslt*

```
xslt - transform the xml-object to html by using a stylesheet

CALL:
  HTMLstring = xslt(obj,xsl,fileName)

INPUT:
  obj: <xml-object>
  xsl: <string> filename of the stylesheet
  fileName: <string> (optional) the name of the file waarnaar
    de HTML string weggeschreven moet worden.

OUTPUT:
  HTMLstring: <string> in HTML de getransformeerde XML string

See also: xml, xml/save, web, xslt
```



## 5.2.15 addns

**Listing 61:** *addns*

```
addns - add a namespace definition to the xml-object

CALL:
  obj = addns(obj,S)

INPUT:
  obj: <xml-object>
  S:   <struct> fieldnames --> namespace variable
        values      --> namespace value
        <cell array> nx2, first column --> namespace variable
                        second column --> namespace value

OUTPUT:
  obj: <xml-object>

See also: xml, xml/listns, xml/clearns, xml/removens, xml/getns
```

## 5.2.16 listns

**Listing 62:** *listns*

```
listns - list the namespace definitions of the xml-object

CALL:
  listns(obj)

INPUT:
  obj: <xml-object>

OUTPUT:
  no direct output, the defined namespaces are displayed on the console

See also: xml, xml/addns, xml/clearns, xml/removens, xml/getns
```

## 5.2.17 clearns

**Listing 63:** *clearns*

```
clearns - remove all the namespace definitions from the xml-object

CALL:
  obj = addns(obj,S)

INPUT:
  obj: <xml-object>
  S:   <struct> fieldnames --> namespace variable
        values      --> namespace value
        <cell array> size: nx2, first column --> namespace variable
                        second column --> namespace value

OUTPUT:
  obj: <xml-object> with no namespace definitions

See also: xml, xml/listns, xml/addns, xml/removens, xml/getns
```

## 5.2.18 removens

### Listing 64: *removens*

```
removens - remove a namespace definition from the xml-object

CALL:
  obj = removens(obj,S)

INPUT:
  obj: <xml-object>
  S:   <char array> with names of the namespace definitions to be removed
      <cell array> with names of the namespace definitions to be removed

OUTPUT:
  obj: <xml-object>

See also: xml, xml/listns, xml/clearns, xml/addns, xml/getns
```

## 5.2.19 getns

### Listing 65: *getns*

```
getns - retrieve a namespace definition from the xml-object

CALL:
  S = listns(obj,key)

INPUT:
  obj: <xml-object>
  key: <string> with a namespace variable for which the definition has to
      be retrieved

OUTPUT:
  S: <string> with the namespace definition

See also: xml, xml/addns, xml/clearns, xml/removens, xml/listns
```

## 5.2.20 get

### Listing 66: *get*

```
get - get the value of the specified property for an xml-object (from the
      object itself not from the xml)

CALL:
  prop val = get(obj,prop name)

INPUT:
  obj: <xml-object>
  prop name: <string> propertyname, possible values:
              - DOM <org.apache.xerces.dom.DeferredDocumentImpl>
                with the DOM representation of the xml
              - file <string> with filename
              - NS <java.util.HashMap> with namespaces

OUTPUT:
  prop val: the value of the specified property for the xml-object
            <struct> with all properties plus values if nargin == 1

See also: xml, xml/set
```

## 5.2.21 set

**Listing 67: set**

```
set - set the value of the specified property for an xml-object

CALL:
  set(obj,prop name,prop value)

INPUT:
  obj:      <xml-object>
  prop_name: <string> propertyname, possible values:
              - DOM <org.apache.xerces.dom.DeferredDocumentImpl>
                  with the DOM representation of the xml
              - file <string> with filename
              - NS  <java.util.HashMap> with namespaces
  prop_value: the value of the property to be set for the xml-object

OUTPUT:
  obj: <xml-object> with the property prop name set to prop value

See also: xml, xml/get
```

## 5.2.22 getRoot

**Listing 68: getRoot**

```
getRoot - get the root node of an xml-object and its name

CALL:
  [rootname root] = getRoot(obj)

INPUT:
  obj: <xml-object>

OUTPUT:
  rootname: <string> the name of the root node
  root:     <java object> org.apache.xerces.dom.DeferredElementNSImpl or
                  org.apache.xerces.dom.DeferredElementImpl

See also: xml, xml/noNodes
```

## 5.2.23 noNodes

**Listing 69: noNodes**

```
noNodes - get the total number of nodes present in the DOM-representation
          of the xml document

CALL:
  N = noNodes(obj)

INPUT:
  obj: <xml-object>

OUTPUT:
  N: <integer> with the total number of nodes in the DOM object

See also: xml, xml/getRoot
```

## 5.3 General functions

### 5.3.1 install

**Listing 70:** *install*

```
install - add necessary paths for the xml-toolbox to the matlabpath and
         classpath.txt
```

### 5.3.2 serializeDOM

**Listing 71:** *serializeDOM*

```
serializeDOM - serialise a DOM by transformation to a string of file

CALL:
String = serialize(DOM,fileName)

INPUT:
DOM:      <java-object> org.apache.xerces.dom.DocumentImpl
fileName: <string> (optional) met een geldige bestandsnaam

OUTPUT:
String: <string> if nargin == 1 the serialised DOM
        <boolean> if nargin == 2,
                        0 -> saving to fileName not successful
                        1 -> saving to fileName successful

See also: xml, xml/inspect, xml/view, xml/save
```

### 5.3.3 startup

**Listing 72:** *startup*

```
startup - startup script for any project using Modelit xml toolbox

NOTES
merge this file with existing startup.m file if necessary
```

### 5.3.4 struct2xmlstring

**Listing 73:** *struct2xmlstring*

```
struct2xmlstr - Fast and simple way to create xml strings from Matlab
                structure. Equivalent to xml2str(xml(S)), but faster.

CALL
str=struct2xmlstr(S)
str=struct2xmlstr(S,rootname)
str=struct2xmlstr(S,rootname,FLOATFORMAT)
str=struct2xmlstr(S,',FLOATFORMAT)

INPUT
S
    Matlab structure.
rootname
    parameter tag to be included as root
FLOATFORMAT
    formatstring to be used by sprintf to convert non-integer numeric
    parameters to character array. Default value: '%f'. Examples of
    other values: '%.10g'; '%.8f'. Any digits beyond specified
    precision will be lost.
```

```

OUTPUT
    str (1xN char array)
        Matlab char array that contains xml representation of S

NOTES
    This is function is useful for conversion of simple Matlab structures
    to XML strings. However it supports only a limited number of
    properties.

EXAMPLES
    struct2xmlstr(S)
    struct2xmlstr(S, '', '%.10g')
    struct2xmlstr(S, '', '%.8f')

```

### 5.3.5 xmlpath

#### Listing 74: *xmlpath*

```

xmlpath - return the path of the xml toolbox

INPUT
    this function accepts no input arguments

OUTPUT
    pname
        Matlab char array containg fuill path to root of Modelit xml toolbox.

```

### 5.3.6 xmlUnitTest

#### Listing 75: *xmlUnitTest*

```

xmlUnitTest - simple verification of module xml.m with various example
               xml files.

```

## 5.4 Private methods of the xml-object.

### 5.4.1 buildXPath

**Listing 76:** *buildXPath*

```
buildXPath - create an XPath object for an XML DOMtree

CALL:
  x = buildXPath(string,nsStruct)

INPUT:
  string:    <string> XPath expression
  Namespaces: <java object> (optional) a java.util.HashMap with namespace
                                     definitions

OUTPUT:
  x: <java object> org.jaxen.dom.DOMXPath

See also: xml, xml/xpath, xml/subsasgn, xml/subsref
```

### 5.4.2 struct2hash

**Listing 77:** *struct2hash*

```
struct2hash - convert a matlab structure into a java hashmap

CALL:
  H = struct2hash(S,H)

INPUT:
  S: <struct> fieldnames --> hashmap keys
      values      --> hashmap entries
  H: <java object> (optional) java.util.HashMap

OUTPUT:
  H: <java object> java.util.HashMap

See also: xml, xml/private/buildXPath
```

### 5.4.3 ind2xpath

**Listing 78:** *ind2xpath*

```
ind2xpath - convert a matlab substruct into an xpath string

CALL:
  xpathstr = ind2xpath(ind)

INPUT:
  ind: <struct> see substruct

OUTPUT:
  xpathstr: <string> xpath equivalent of the substruct

See also: xml, xml/private/buildXpath, xml/subsasgn, xml/subsref,
          xml/xpath, substruct
```

### 5.4.4 emptyDocument

**Listing 79:** *emptyDocument*

```
emptyDocument - create an empty Document Object Model (DOM) (only the
                root node is present)

CALL:
  document = emptyDocument(root)

INPUT:
  root: (optional) <string> name of the root node
          <org.apache.xerces.dom.ElementImpl>
          <org.apache.xerces.dom.ElementNSImpl>
          default == 'root'

OUTPUT:
  document: <java-object> org.apache.xerces.dom.DocumentImpl

See also: xml, xml/view, xml/inspect
```

## 5.4.5 sub2ind

### Listing 80: *sub2ind*

```
sub2ind - convert a string into a struct array of type substruct, for
          indexing into xml documents as if they were Matlab structures

CALL:
  ind = sub2ind(S)

INPUT:
  S: <string> index into xml document (same format as indexing into
      Matlab structures) e.g. 'book(1)' or 'book(1).title' result
      in the same substructs as would be obtained if S.book(1) or
      S.book(1).title were used (S a Matlab structure).

OUTPUT:
  ind: <struct array> with fields:
      - type -> subscript types '.', '()', or '{}'
      - subs -> actual subscript values (field names or
              cell arrays of index vectors)

See also: xml, xml/isfield, xml/rmfield, substruct
```

## 5.4.6 fieldInfo

### Listing 81: *fieldInfo*

```
fieldInfo - determine the number and names of the direct children of the
            root node and the name of the root node

CALL:
  S = fieldInfo(obj)

INPUT:
  obj: <xml-object>

OUTPUT:
  S:  <struct> with fields
      - root      : <string> name of the root node
      - children  : <struct> with fields
                    - name:      <string> names of the direct children of
                                the root node
                    - frequency: <int> number of time a certain node
                                appears

See also: xml, xml/display
```

## 5.4.7 toString

### Listing 82: *toString*

```
toString - convert java object, cellstring or char array to string

CALL:
  S = toString(S)

INPUT:
  S: <cell string>
     <char array>
     <java object>

OUTPUT:
  S: <string>

See also: xml, xml/xpath, xml/subsasgn
```



### 5.4.8 chararray2char

**Listing 83:** *chararray2char*

```
chararray2char - convert char array to string

CALL:
  str = chararray2char(str)

INPUT:
  str: <char array>

OUTPUT:
  str: <string>

See also: xml, xml/xpath, xml/subsasgn, xml/private/toString
```

## 6 Examples

In this section the XML files which are used in the examples are listed. These XML files can also be found in the subdirectory 'example' of the directory where the XML toolbox is installed.

### 6.1 Books

This example was taken from <http://www.w3schools.com>.

**Listing 84:** *books.xml*

```
<?xml version="1.0" encoding="ISO-8859-1"?>
<bookstore>
  <book category="COOKING">
    <title lang="en">Everyday Italian</title>
    <author>Giada De Laurentiis</author>
    <year>2005</year>
    <price>30.00</price>
  </book>
  <book category="CHILDREN">
    <title lang="en">Harry Potter</title>
    <author>J K. Rowling</author>
    <year>2005</year>
    <price>29.99</price>
  </book>
  <book category="WEB">
    <title lang="en">XQuery Kick Start</title>
    <author>James McGovern</author>
    <author>Per Bothner</author>
    <author>Kurt Cagle</author>
    <author>James Linn</author>
    <author>Vaidyanathan Nagarajan</author>
    <year>2003</year>
    <price>49.99</price>
  </book>
  <book category="WEB">
    <title lang="en">Learning XML</title>
    <author>Erik T. Ray</author>
    <year>2003</year>
    <price>39.95</price>
  </book>
</bookstore>
```

**Listing 85:** *book.xml*

```
<?xml version="1.0" encoding="ISO-8859-1"?>
<book category="MATHS">
  <title lang="en">Probability and Random Processes</title>
  <author>G.R. Grimmett</author>
  <author>D.R. Stirzaker</author>
  <year>1992</year>
  <price>39.00</price>
</book>
```

## 6.2 cd\_catalog

This example was taken from <http://www.w3schools.com>.

**Listing 86:** *cd\_catalog.xml*

```
<?xml version="1.0" encoding="ISO-8859-1>
<CATALOG>
  <CD>
    <TITLE>Empire Burlesque</TITLE>
    <ARTIST>Bob Dylan</ARTIST>
    <COUNTRY>USA</COUNTRY>
    <COMPANY>Columbia</COMPANY>
    <PRICE>10.90</PRICE>
    <YEAR>1985</YEAR>
  </CD>
  <CD>
    <TITLE>Hide your heart</TITLE>
    <ARTIST>Bonnie Tyler</ARTIST>
    <COUNTRY>UK</COUNTRY>
    <COMPANY>CBS Records</COMPANY>
    <PRICE>9.90</PRICE>
    <YEAR>1988</YEAR>
  </CD>
  <CD>
    <TITLE>Greatest Hits</TITLE>
    <ARTIST>Dolly Parton</ARTIST>
    <COUNTRY>USA</COUNTRY>
    <COMPANY>RCA</COMPANY>
    <PRICE>9.90</PRICE>
    <YEAR>1982</YEAR>
  </CD>
  <CD>
    <TITLE>Still got the blues</TITLE>
    <ARTIST>Gary Moore</ARTIST>
    <COUNTRY>UK</COUNTRY>
    <COMPANY>Virgin records</COMPANY>
    <PRICE>10.20</PRICE>
    <YEAR>1990</YEAR>
  </CD>
  <CD>
    <TITLE>Eros</TITLE>
    <ARTIST>Eros Ramazzotti</ARTIST>
    <COUNTRY>EU</COUNTRY>
    <COMPANY>BMG</COMPANY>
    <PRICE>9.90</PRICE>
    <YEAR>1997</YEAR>
  </CD>
  <CD>
    <TITLE>One night only</TITLE>
    <ARTIST>Bee Gees</ARTIST>
    <COUNTRY>UK</COUNTRY>
    <COMPANY>Polydor</COMPANY>
    <PRICE>10.90</PRICE>
    <YEAR>1998</YEAR>
  </CD>
  <CD>
    <TITLE>Sylvias Mother</TITLE>
    <ARTIST>Dr.Hook</ARTIST>
    <COUNTRY>UK</COUNTRY>
    <COMPANY>CBS</COMPANY>
    <PRICE>8.10</PRICE>
    <YEAR>1973</YEAR>
  </CD>
  <CD>
    <TITLE>Maggie May</TITLE>
    <ARTIST>Rod Stewart</ARTIST>
    <COUNTRY>UK</COUNTRY>
    <COMPANY>Pickwick</COMPANY>
    <PRICE>8.50</PRICE>
    <YEAR>1990</YEAR>
  </CD>
</CATALOG>
```

```

<CD>
  <TITLE>Romanza</TITLE>
  <ARTIST>Andrea Bocelli</ARTIST>
  <COUNTRY>EU</COUNTRY>
  <COMPANY>Polydor</COMPANY>
  <PRICE>10.80</PRICE>
  <YEAR>1996</YEAR>
</CD>
<CD>
  <TITLE>When a man loves a woman</TITLE>
  <ARTIST>Percy Sledge</ARTIST>
  <COUNTRY>USA</COUNTRY>
  <COMPANY>Atlantic</COMPANY>
  <PRICE>8.70</PRICE>
  <YEAR>1987</YEAR>
</CD>
<CD>
  <TITLE>Black angel</TITLE>
  <ARTIST>Savage Rose</ARTIST>
  <COUNTRY>EU</COUNTRY>
  <COMPANY>Mega</COMPANY>
  <PRICE>10.90</PRICE>
  <YEAR>1995</YEAR>
</CD>
<CD>
  <TITLE>1999 Grammy Nominees</TITLE>
  <ARTIST>Many</ARTIST>
  <COUNTRY>USA</COUNTRY>
  <COMPANY>Grammy</COMPANY>
  <PRICE>10.20</PRICE>
  <YEAR>1999</YEAR>
</CD>
<CD>
  <TITLE>For the good times</TITLE>
  <ARTIST>Kenny Rogers</ARTIST>
  <COUNTRY>UK</COUNTRY>
  <COMPANY>Mucik Master</COMPANY>
  <PRICE>8.70</PRICE>
  <YEAR>1995</YEAR>
</CD>
<CD>
  <TITLE>Big Willie style</TITLE>
  <ARTIST>Will Smith</ARTIST>
  <COUNTRY>USA</COUNTRY>
  <COMPANY>Columbia</COMPANY>
  <PRICE>9.90</PRICE>
  <YEAR>1997</YEAR>
</CD>
<CD>
  <TITLE>Tupelo Honey</TITLE>
  <ARTIST>Van Morrison</ARTIST>
  <COUNTRY>UK</COUNTRY>
  <COMPANY>Polydor</COMPANY>
  <PRICE>8.20</PRICE>
  <YEAR>1971</YEAR>
</CD>
<CD>
  <TITLE>Soulsville</TITLE>
  <ARTIST>Jorn Hoel</ARTIST>
  <COUNTRY>Norway</COUNTRY>
  <COMPANY>WEA</COMPANY>
  <PRICE>7.90</PRICE>
  <YEAR>1996</YEAR>
</CD>
<CD>
  <TITLE>The very best of</TITLE>
  <ARTIST>Cat Stevens</ARTIST>
  <COUNTRY>UK</COUNTRY>
  <COMPANY>Island</COMPANY>
  <PRICE>8.90</PRICE>
  <YEAR>1990</YEAR>
</CD>
<CD>
  <TITLE>Stop</TITLE>
  <ARTIST>Sam Brown</ARTIST>
  <COUNTRY>UK</COUNTRY>

```

```

        <COMPANY>A and M</COMPANY>
        <PRICE>8.90</PRICE>
        <YEAR>1988</YEAR>
    </CD>
    <CD>
        <TITLE>Bridge of Spies</TITLE>
        <ARTIST>T'Pau</ARTIST>
        <COUNTRY>UK</COUNTRY>
        <COMPANY>Siren</COMPANY>
        <PRICE>7.90</PRICE>
        <YEAR>1987</YEAR>
    </CD>
    <CD>
        <TITLE>Private Dancer</TITLE>
        <ARTIST>Tina Turner</ARTIST>
        <COUNTRY>UK</COUNTRY>
        <COMPANY>Capitol</COMPANY>
        <PRICE>8.90</PRICE>
        <YEAR>1983</YEAR>
    </CD>
    <CD>
        <TITLE>Midt om natten</TITLE>
        <ARTIST>Kim Larsen</ARTIST>
        <COUNTRY>EU</COUNTRY>
        <COMPANY>Medley</COMPANY>
        <PRICE>7.80</PRICE>
        <YEAR>1983</YEAR>
    </CD>
    <CD>
        <TITLE>Pavarotti Gala Concert</TITLE>
        <ARTIST>Luciano Pavarotti</ARTIST>
        <COUNTRY>UK</COUNTRY>
        <COMPANY>DECCA</COMPANY>
        <PRICE>9.90</PRICE>
        <YEAR>1991</YEAR>
    </CD>
    <CD>
        <TITLE>The dock of the bay</TITLE>
        <ARTIST>Otis Redding</ARTIST>
        <COUNTRY>USA</COUNTRY>
        <COMPANY>Atlantic</COMPANY>
        <PRICE>7.90</PRICE>
        <YEAR>1987</YEAR>
    </CD>
    <CD>
        <TITLE>Picture book</TITLE>
        <ARTIST>Simply Red</ARTIST>
        <COUNTRY>EU</COUNTRY>
        <COMPANY>Elektra</COMPANY>
        <PRICE>7.20</PRICE>
        <YEAR>1985</YEAR>
    </CD>
    <CD>
        <TITLE>Red</TITLE>
        <ARTIST>The Communards</ARTIST>
        <COUNTRY>UK</COUNTRY>
        <COMPANY>London</COMPANY>
        <PRICE>7.80</PRICE>
        <YEAR>1987</YEAR>
    </CD>
    <CD>
        <TITLE>Unchain my heart</TITLE>
        <ARTIST>Joe Cocker</ARTIST>
        <COUNTRY>USA</COUNTRY>
        <COMPANY>EMI</COMPANY>
        <PRICE>8.20</PRICE>
        <YEAR>1987</YEAR>
    </CD>
</CATALOG>

```

**Listing 87:** *cd\_catalog.xsl*

```

<?xml version="1.0" encoding="ISO-8859-1"?>
<!-- Edited with XML Spy v2006 (http://www.altova.com) -->
<xsl:stylesheet version="1.0"
xmlns:xsl="http://www.w3.org/1999/XSL/Transform">
<xsl:template match="/">
  <html>
  <body>
    <h2>My CD Collection</h2>
    <table border="1">
      <tr bgcolor="#9acd32">
        <th>Title</th>
        <th>Artist</th>
      </tr>
      <xsl:for-each select="CATALOG/CD">
        <tr>
          <td><xsl:value-of select="TITLE" /></td>
          <td><xsl:value-of select="ARTIST" /></td>
        </tr>
      </xsl:for-each>
    </table>
  </body>
</html>
</xsl:template>
</xsl:stylesheet>

```

### 6.3 Business\_card

This example was taken from <http://www.brics.dk/~amoeller/XML/>

**Listing 88:** *business\_card.xml*

```
<?xml version="1.0" encoding="ISO-8859-1"?>
<card type="simple">
  <name>John Doe</name>
  <title>CEO, Widget Inc.</title>
  <email>john.doe@widget.com</email>
  <phone>(202) 456-1414</phone>
</card>
```

**Listing 89:** *business\_card.xsl*

```
<xsl:stylesheet xmlns:xsl="http://www.w3.org/1999/XSL/Transform" version="1.0"
  xmlns="http://www.w3.org/1999/xhtml">

  <xsl:template match="card[@type='simple']">
    <html xmlns="http://www.w3.org/1999/xhtml">
      <title>business card</title><body>
        <xsl:apply-templates select="name"/>
        <xsl:apply-templates select="title"/>
        <xsl:apply-templates select="email"/>
        <xsl:apply-templates select="phone"/>
      </body></html>
    </xsl:template>

    <xsl:template match="card/name">
      <h1><xsl:value-of select="text()" /></h1>
    </xsl:template>

    <xsl:template match="email">
      <p>email: <a href="mailto:{text()}"><tt>
        <xsl:value-of select="text()" />
      </tt></a></p>
    </xsl:template>

  </xsl:stylesheet>
```

## 6.4 Note

This example was taken from <http://www.w3schools.com>

**Listing 90:** *note\_dtd.xml*

```
<?xml version="1.0"?>
<!DOCTYPE note SYSTEM "note.dtd">
<note>
    <to>Tove</to>
    <from>Jani</from>
    <heading>Reminder</heading>
    <body>Don't forget me this weekend!</body>
</note>
```

**Listing 91:** *note.dtd*

```
<!ELEMENT note (to,from,heading,body)>
<!ELEMENT to (#PCDATA)>
<!ELEMENT from (#PCDATA)>
<!ELEMENT heading (#PCDATA)>
<!ELEMENT body (#PCDATA)>
```

**Listing 92:** *note\_xsd.xml*

```
<?xml version="1.0"?><note
xmlns="http://www.w3schools.com"
xmlns:xsi="http://www.w3.org/2001/XMLSchema-instance"
xsi:schemaLocation="http://www.w3schools.com note.xsd">
    <to>Tove</to>
    <from>Jani</from>
    <heading>Reminder</heading>
    <body>Don't forget me this weekend!</body>
</note>
```

**Listing 93:** *note.xsd*

```
<?xml version="1.0"?>
<xs:schema xmlns:xs="http://www.w3.org/2001/XMLSchema"
targetNamespace="http://www.w3schools.com"
xmlns="http://www.w3schools.com"
elementFormDefault="qualified"><xs:element name="note">
    <xs:complexType>
        <xs:sequence>
            <xs:element name="to" type="xs:string"/>
            <xs:element name="from" type="xs:string"/>
            <xs:element name="heading" type="xs:string"/>
            <xs:element name="body" type="xs:string"/>
        </xs:sequence>
    </xs:complexType>
</xs:element></xs:schema>
```



## 6.5 Plant\_catalog

This example was taken from <http://www.w3schools.com>

**Listing 94:** *plant\_catalog.xml*

```
<?xml version="1.0" encoding="ISO-8859-1"?>
<CATALOG>
  <PLANT>
    <COMMON>Bloodroot</COMMON>
    <BOTANICAL>Sanguinaria canadensis</BOTANICAL>
    <ZONE>4</ZONE>
    <LIGHT>Mostly Shady</LIGHT>
    <PRICE>$2.44</PRICE>
    <AVAILABILITY>031599</AVAILABILITY>
  </PLANT>

  <PLANT>
    <COMMON>Columbine</COMMON>
    <BOTANICAL>Aquilegia canadensis</BOTANICAL>
    <ZONE>3</ZONE>
    <LIGHT>Mostly Shady</LIGHT>
    <PRICE>$9.37</PRICE>
    <AVAILABILITY>030699</AVAILABILITY>
  </PLANT>

  <PLANT>
    <COMMON>Marsh Marigold</COMMON>
    <BOTANICAL>Caltha palustris</BOTANICAL>
    <ZONE>4</ZONE>
    <LIGHT>Mostly Sunny</LIGHT>
    <PRICE>$6.81</PRICE>
    <AVAILABILITY>051799</AVAILABILITY>
  </PLANT>

  <PLANT>
    <COMMON>Cowslip</COMMON>
    <BOTANICAL>Caltha palustris</BOTANICAL>
    <ZONE>4</ZONE>
    <LIGHT>Mostly Shady</LIGHT>
    <PRICE>$9.90</PRICE>
    <AVAILABILITY>030699</AVAILABILITY>
  </PLANT>

  <PLANT>
    <COMMON>Dutchman's-Breeches</COMMON>
    <BOTANICAL>Diecentra cucullaria</BOTANICAL>
    <ZONE>3</ZONE>
    <LIGHT>Mostly Shady</LIGHT>
    <PRICE>$6.44</PRICE>
    <AVAILABILITY>012099</AVAILABILITY>
  </PLANT>

  <PLANT>
    <COMMON>Ginger, Wild</COMMON>
    <BOTANICAL>Asarum canadense</BOTANICAL>
    <ZONE>3</ZONE>
    <LIGHT>Mostly Shady</LIGHT>
    <PRICE>$9.03</PRICE>
    <AVAILABILITY>041899</AVAILABILITY>
  </PLANT>

  <PLANT>
    <COMMON>Hepatica</COMMON>
    <BOTANICAL>Hepatica americana</BOTANICAL>
    <ZONE>4</ZONE>
    <LIGHT>Mostly Shady</LIGHT>
    <PRICE>$4.45</PRICE>
    <AVAILABILITY>012699</AVAILABILITY>
  </PLANT>

  <PLANT>
```

```

    <COMMON>Liverleaf</COMMON>
    <BOTANICAL>Hepatica americana</BOTANICAL>
    <ZONE>4</ZONE>
    <LIGHT>Mostly Shady</LIGHT>
    <PRICE>$3.99</PRICE>
    <AVAILABILITY>010299</AVAILABILITY>
  </PLANT>

  <PLANT>
    <COMMON>Jack-In-The-Pulpit</COMMON>
    <BOTANICAL>Arisaema triphyllum</BOTANICAL>
    <ZONE>4</ZONE>
    <LIGHT>Mostly Shady</LIGHT>
    <PRICE>$3.23</PRICE>
    <AVAILABILITY>020199</AVAILABILITY>
  </PLANT>

  <PLANT>
    <COMMON>Mayapple</COMMON>
    <BOTANICAL>Podophyllum peltatum</BOTANICAL>
    <ZONE>3</ZONE>
    <LIGHT>Mostly Shady</LIGHT>
    <PRICE>$2.98</PRICE>
    <AVAILABILITY>060599</AVAILABILITY>
  </PLANT>

  <PLANT>
    <COMMON>Phlox, Woodland</COMMON>
    <BOTANICAL>Phlox divaricata</BOTANICAL>
    <ZONE>3</ZONE>
    <LIGHT>Sun or Shade</LIGHT>
    <PRICE>$2.80</PRICE>
    <AVAILABILITY>012299</AVAILABILITY>
  </PLANT>

  <PLANT>
    <COMMON>Phlox, Blue</COMMON>
    <BOTANICAL>Phlox divaricata</BOTANICAL>
    <ZONE>3</ZONE>
    <LIGHT>Sun or Shade</LIGHT>
    <PRICE>$5.59</PRICE>
    <AVAILABILITY>021699</AVAILABILITY>
  </PLANT>

  <PLANT>
    <COMMON>Spring-Beauty</COMMON>
    <BOTANICAL>Claytonia Virginica</BOTANICAL>
    <ZONE>7</ZONE>
    <LIGHT>Mostly Shady</LIGHT>
    <PRICE>$6.59</PRICE>
    <AVAILABILITY>020199</AVAILABILITY>
  </PLANT>

  <PLANT>
    <COMMON>Trillium</COMMON>
    <BOTANICAL>Trillium grandiflorum</BOTANICAL>
    <ZONE>5</ZONE>
    <LIGHT>Sun or Shade</LIGHT>
    <PRICE>$3.90</PRICE>
    <AVAILABILITY>042999</AVAILABILITY>
  </PLANT>

  <PLANT>
    <COMMON>Wake Robin</COMMON>
    <BOTANICAL>Trillium grandiflorum</BOTANICAL>
    <ZONE>5</ZONE>
    <LIGHT>Sun or Shade</LIGHT>
    <PRICE>$3.20</PRICE>
    <AVAILABILITY>022199</AVAILABILITY>
  </PLANT>

  <PLANT>
    <COMMON>Violet, Dog-Tooth</COMMON>
    <BOTANICAL>Erythronium americanum</BOTANICAL>
    <ZONE>4</ZONE>
    <LIGHT>Shade</LIGHT>

```

```

    <PRICE>$9.04</PRICE>
    <AVAILABILITY>020199</AVAILABILITY>
  </PLANT>

  <PLANT>
    <COMMON>Trout Lily</COMMON>
    <BOTANICAL>Erythronium americanum</BOTANICAL>
    <ZONE>4</ZONE>
    <LIGHT>Shade</LIGHT>
    <PRICE>$6.94</PRICE>
    <AVAILABILITY>032499</AVAILABILITY>
  </PLANT>

  <PLANT>
    <COMMON>Adder's-Tongue</COMMON>
    <BOTANICAL>Erythronium americanum</BOTANICAL>
    <ZONE>4</ZONE>
    <LIGHT>Shade</LIGHT>
    <PRICE>$9.58</PRICE>
    <AVAILABILITY>041399</AVAILABILITY>
  </PLANT>

  <PLANT>
    <COMMON>Anemone</COMMON>
    <BOTANICAL>Anemone blanda</BOTANICAL>
    <ZONE>6</ZONE>
    <LIGHT>Mostly Shady</LIGHT>
    <PRICE>$8.86</PRICE>
    <AVAILABILITY>122698</AVAILABILITY>
  </PLANT>

  <PLANT>
    <COMMON>Grecian Windflower</COMMON>
    <BOTANICAL>Anemone blanda</BOTANICAL>
    <ZONE>6</ZONE>
    <LIGHT>Mostly Shady</LIGHT>
    <PRICE>$9.16</PRICE>
    <AVAILABILITY>071099</AVAILABILITY>
  </PLANT>

  <PLANT>
    <COMMON>Bee Balm</COMMON>
    <BOTANICAL>Monarda didyma</BOTANICAL>
    <ZONE>4</ZONE>
    <LIGHT>Shade</LIGHT>
    <PRICE>$4.59</PRICE>
    <AVAILABILITY>050399</AVAILABILITY>
  </PLANT>

  <PLANT>
    <COMMON>Bergamont</COMMON>
    <BOTANICAL>Monarda didyma</BOTANICAL>
    <ZONE>4</ZONE>
    <LIGHT>Shade</LIGHT>
    <PRICE>$7.16</PRICE>
    <AVAILABILITY>042799</AVAILABILITY>
  </PLANT>

  <PLANT>
    <COMMON>Black-Eyed Susan</COMMON>
    <BOTANICAL>Rudbeckia hirta</BOTANICAL>
    <ZONE>Annual</ZONE>
    <LIGHT>Sunny</LIGHT>
    <PRICE>$9.80</PRICE>
    <AVAILABILITY>061899</AVAILABILITY>
  </PLANT>

  <PLANT>
    <COMMON>Buttercup</COMMON>
    <BOTANICAL>Ranunculus</BOTANICAL>
    <ZONE>4</ZONE>
    <LIGHT>Shade</LIGHT>
    <PRICE>$2.57</PRICE>
    <AVAILABILITY>061099</AVAILABILITY>
  </PLANT>

```

```

<PLANT>
  <COMMON>Crowfoot</COMMON>
  <BOTANICAL>Ranunculus</BOTANICAL>
  <ZONE>4</ZONE>
  <LIGHT>Shade</LIGHT>
  <PRICE>$9.34</PRICE>
  <AVAILABILITY>040399</AVAILABILITY>
</PLANT>

<PLANT>
  <COMMON>Butterfly Weed</COMMON>
  <BOTANICAL>Asclepias tuberosa</BOTANICAL>
  <ZONE>Annual</ZONE>
  <LIGHT>Sunny</LIGHT>
  <PRICE>$2.78</PRICE>
  <AVAILABILITY>063099</AVAILABILITY>
</PLANT>

<PLANT>
  <COMMON>Cinquefoil</COMMON>
  <BOTANICAL>Potentilla</BOTANICAL>
  <ZONE>Annual</ZONE>
  <LIGHT>Shade</LIGHT>
  <PRICE>$7.06</PRICE>
  <AVAILABILITY>052599</AVAILABILITY>
</PLANT>

<PLANT>
  <COMMON>Primrose</COMMON>
  <BOTANICAL>Oenothera</BOTANICAL>
  <ZONE>3 - 5</ZONE>
  <LIGHT>Sunny</LIGHT>
  <PRICE>$6.56</PRICE>
  <AVAILABILITY>013099</AVAILABILITY>
</PLANT>

<PLANT>
  <COMMON>Gentian</COMMON>
  <BOTANICAL>Gentiana</BOTANICAL>
  <ZONE>4</ZONE>
  <LIGHT>Sun or Shade</LIGHT>
  <PRICE>$7.81</PRICE>
  <AVAILABILITY>051899</AVAILABILITY>
</PLANT>

<PLANT>
  <COMMON>Blue Gentian</COMMON>
  <BOTANICAL>Gentiana</BOTANICAL>
  <ZONE>4</ZONE>
  <LIGHT>Sun or Shade</LIGHT>
  <PRICE>$8.56</PRICE>
  <AVAILABILITY>050299</AVAILABILITY>
</PLANT>

<PLANT>
  <COMMON>Jacob's Ladder</COMMON>
  <BOTANICAL>Polemonium caeruleum</BOTANICAL>
  <ZONE>Annual</ZONE>
  <LIGHT>Shade</LIGHT>
  <PRICE>$9.26</PRICE>
  <AVAILABILITY>022199</AVAILABILITY>
</PLANT>

<PLANT>
  <COMMON>Greek Valerian</COMMON>
  <BOTANICAL>Polemonium caeruleum</BOTANICAL>
  <ZONE>Annual</ZONE>
  <LIGHT>Shade</LIGHT>
  <PRICE>$4.36</PRICE>
  <AVAILABILITY>071499</AVAILABILITY>
</PLANT>

<PLANT>
  <COMMON>California Poppy</COMMON>
  <BOTANICAL>Eschscholzia californica</BOTANICAL>
  <ZONE>Annual</ZONE>

```

```

    <LIGHT>Sun</LIGHT>
    <PRICE>$7.89</PRICE>
    <AVAILABILITY>032799</AVAILABILITY>
  </PLANT>

  <PLANT>
    <COMMON>Shooting Star</COMMON>
    <BOTANICAL>Dodecatheon</BOTANICAL>
    <ZONE>Annual</ZONE>
    <LIGHT>Mostly Shady</LIGHT>
    <PRICE>$8.60</PRICE>
    <AVAILABILITY>051399</AVAILABILITY>
  </PLANT>

  <PLANT>
    <COMMON>Snakeroot</COMMON>
    <BOTANICAL>Cimicifuga</BOTANICAL>
    <ZONE>Annual</ZONE>
    <LIGHT>Shade</LIGHT>
    <PRICE>$5.63</PRICE>
    <AVAILABILITY>071199</AVAILABILITY>
  </PLANT>

  <PLANT>
    <COMMON>Cardinal Flower</COMMON>
    <BOTANICAL>Lobelia cardinalis</BOTANICAL>
    <ZONE>2</ZONE>
    <LIGHT>Shade</LIGHT>
    <PRICE>$3.02</PRICE>
    <AVAILABILITY>022299</AVAILABILITY>
  </PLANT>
</CATALOG>

```

## 6.6 namespaces

This example is adapted from <http://www.w3schools.com>

**Listing 95:** *namespaces.xml*

```
<?xml version="1.0" encoding="ISO-8859-1"?>
<table xmlns:ns="http://www.w3schools.com/furniture"
  xmlns:nsdim="http://www.modelit.nl/dimension">
  <ns:name>African Coffee Table</ns:name>
  <width nsdim:dim="centimeter">80</width>
  <length nsdim:dim="meter">1.20</length>
</table>
```

## 6.7 default\_namespace

This example is adapted from <http://www.w3schools.com>

**Listing 96:** *default\_namespace.xml*

```
<?xml version="1.0" encoding="ISO-8859-1"?>
<table xmlns="http://www.w3schools.com/furniture">
  <name>African Coffee Table</name>
  <width>80</width>
  <length>1.20</length>
</table>
```

## 6.8 mixed

This example is adapted from <http://www.w3schools.com>

**Listing 97:** *mixed.xml*

```
<?xml version="1.0" encoding="ISO-8859-1"?>
<collection>
  <item>
    <TITLE>Empire Burlesque</TITLE>
    <ARTIST>Bob Dylan</ARTIST>
    <COUNTRY>USA</COUNTRY>
    <COMPANY>Columbia</COMPANY>
    <PRICE>10.90</PRICE>
    <YEAR>1985</YEAR>
  </item>
  <item>
    <title lang="en">Harry Potter</title>
    <author>J K. Rowling</author>
    <year>2005</year>
    <price>29.99</price>
  </item>
</collection>
```